

## Recombinant Mouse Crtam protein, His-tagged

**Cat. No.** Crtam-785M    **Lot. No.** (See product label)

### SPECIFICATION

<b>Product Overview</b>	Recombinant Mouse Crtam protein(Q149L7-1)(Ala17-Gly289), fused with C-terminal His tag, was expressed in HEK293.
<b>Species</b>	Mouse
<b>Source</b>	HEK293
<b>ProteinLength</b>	Ala17-Gly289
<b>Tag</b>	C-His
<b>Form</b>	Lyophilized from 0.22µm filtered solution in PBS (pH 7.4). Normally 8% trehalose is added as protectant before lyophilization.
<b>Molecular Mass</b>	The protein has a predicted MW of 31.1 kDa. Due to glycosylation, the protein migrates to 60-70 kDa based on Tris-Bis PAGE result.
<b>Endotoxin</b>	Less than 1EU per µg by the LAL method.
<b>Purity</b>	> 95% as determined by Tris-Bis PAGE
<b>Storage</b>	Reconstituted protein stable at -80°C for 12 months, 4°C for 1 week. Use a manual defrost freezer and avoid repeated freeze-thaw cycles.
<b>Reconstitution</b>	Centrifuge tubes before opening. Reconstituting to a concentration more than 100

 Tel: 1-631-559-9269    1-516-512-3133

 Email: [info@creative-biomart.com](mailto:info@creative-biomart.com)     Fax: 1-631-938-8127

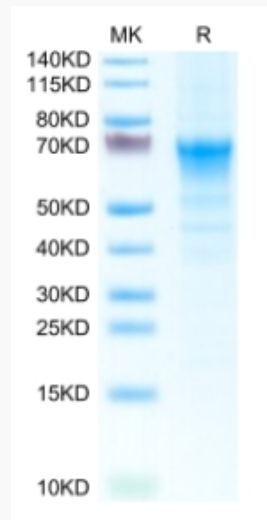
 45-1 Ramsey Road, Shirley, NY 11967, USA

µg/ml is recommended. Dissolve the lyophilized protein in distilled water.

## GENE INFORMATION

<b>Gene Name</b>	Crtam cytotoxic and regulatory T cell molecule [ <i>Mus musculus</i> ]
<b>Official Symbol</b>	Crtam
<b>Synonyms</b>	CRTAM; cytotoxic and regulatory T cell molecule; cytotoxic and regulatory T-cell molecule; class I-restricted T cell-associated molecule; class-I MHC-restricted T-cell-associated molecule; MGC141606; MGC141607;
<b>Gene ID</b>	54698
<b>mRNA Refseq</b>	NM_019465
<b>Protein Refseq</b>	NP_062338

### Tris-Bis PAGE



Tel: 1-631-559-9269 1-516-512-3133

Email: [info@creative-biomart.com](mailto:info@creative-biomart.com) Fax: 1-631-938-8127

45-1 Ramsey Road, Shirley, NY 11967, USA