

## Recombinant Mouse Cry2 protein, His&Myc-tagged

Cat. No. Cry2-5633M Lot. No. (See product label)

### SPECIFICATION

<b>Product Overview</b>	Recombinant Mouse Cry2 protein(Q9R194)(1-592aa), fused with N-terminal His tag and C-terminal Myc tag, was expressed in E.coli.
<b>Species</b>	Mouse
<b>Source</b>	E.coli
<b>ProteinLength</b>	1-592a.a.
<b>Tag</b>	His&Myc
<b>Form</b>	If the delivery form is liquid, the default storage buffer is Tris/PBS-based buffer, 5%-50% glycerol. If the delivery form is lyophilized powder, the buffer before lyophilization is Tris/PBS-based buffer, 6% Trehalose, pH 8.0.
<b>Molecular Mass</b>	74.3 kDa
<b>Purity</b>	Greater than 85% as determined by SDS-PAGE.
<b>Storage</b>	Store at -20°C/-80°C upon receipt, aliquoting is necessary for mutiple use. Avoid repeated freeze-thaw cycles.
<b>Reconstitution</b>	We recommend that this vial be briefly centrifuged prior to opening to bring the contents to the bottom. Please reconstitute protein in deionized sterile water to a concentration of 0.1-1.0 mg/mL.We recommend to add 5-50% of glycerol (final

 Tel: 1-631-559-9269 1-516-512-3133

 Email: [info@creative-biomart.com](mailto:info@creative-biomart.com)  Fax: 1-631-938-8127

 45-1 Ramsey Road, Shirley, NY 11967, USA

concentration) and aliquot for long-term storage at -20°C/-80°C.

**AA Sequence**

```

MAAAVVAATVPAQSMGADGASSVHWFRKGLRLHDNPALLAAVRGARCVCVYIL
DPWFAASSSVGINRWRFLQSLLEDLDTSLRKLNSRLFVVRGQPADVFPRLFKEWGV
TRLTFEYDSEPFGKERDAAIMKMAKEAGVEVVTENSHTLYDLDRIIELNGQKPPLTYK
RFQALISRMELPKKPAVAVSSQQMESCR AEIQENHDDTYGVPSLEELGFPTEGLGP
AVWQGGETEALARLDKHLERKAWVANYERPRMNANLLASPTGLSPYLRFGCLSC
RLFFYYRLWDLYKKVKRNSTPPLSLFGQLLWREFFYTAATNNPRFDRMEGNPICIQIP
WDRNPEALAKWAEGKTGFPWIDAIMTQLRQEGWIHHLARHAVACFLTRGDLWVSW
ESGVRVFDELLLDADFSVNAGSWMWLSCSAFFQQFFHCYCPVGFGRRTDPSGDYI
RRYLPKLGFP SRYIYEPWNAPESVQKAAKCIIGVDYPRPIVNHAETSRLNIERMKQI
YQQLSRYRGLCLLASVPSCVEDLSHPVAEPGSSQAGSISNTGPRALSSGPASPKRK
LEAAEPPGEELTKRARVTEMPTQEPASKDS
    
```

**GENE INFORMATION**

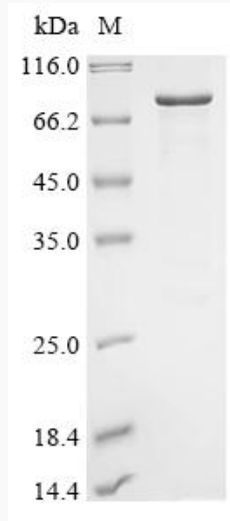
<b>Gene Name</b>	Cry2 cryptochrome 2 (photolyase-like) [ <i>Mus musculus</i> ]
<b>Official Symbol</b>	Cry2
<b>Synonyms</b>	CRY2; cryptochrome 2 (photolyase-like); cryptochrome-2; AV006279; D130054K12Rik;
<b>Gene ID</b>	12953
<b>mRNA Refseq</b>	NM_001113333
<b>Protein Refseq</b>	NP_001106804

 Tel: 1-631-559-9269 1-516-512-3133

 Email: [info@creative-biomart.com](mailto:info@creative-biomart.com)  Fax: 1-631-938-8127

 45-1 Ramsey Road, Shirley, NY 11967, USA

**SDS-PAGE**



 Tel: 1-631-559-9269 1-516-512-3133

 Email: [info@creative-biomart.com](mailto:info@creative-biomart.com)  Fax: 1-631-938-8127

 45-1 Ramsey Road, Shirley, NY 11967, USA