

# Native *Bacillus thuringiensis* Cry2Ab Protein

**Cat. No.** Cry2Ab-37B    **Lot. No.** (See product label)

## SPECIFICATION

<b>Product Overview</b>	Native <i>Bacillus thuringiensis</i> Cry2Ab Protein was expressed in <i>E. coli</i> . Expression Vector: pET-28a.
<b>Species</b>	<i>Bacillus thuringiensis</i>
<b>Source</b>	<i>E. coli</i>
<b>Protein Length</b>	1 ~ 634 aa
<b>Description</b>	Pesticidal crystal protein Cry2Ab
<b>Form</b>	Liquid
<b>Molecular Mass</b>	70.86 kDa
<b>AA Sequence</b>	<p>MDNSVLNSGRTTICDAYNVAAHDPFSFQHKSLDTVQKEWTEWKKNNHSLYLDPIVG  TVASFLLKKVGS LVGKRILSELRNLI FPSGSTNLMQDILRETEKFLNQRLNTDTLARVN  AELTGLQANVEEFNRQVDNFLNPNRNAVPLSITSSVNTMQQLFLNRLPQFQMGGYQ  LLLLPLFAQAANLHLSFIRDVILNADEWGISAATLR TYRDYLKNYTRDYSNYCINTYQS  AFKGLNTRLHDMLEFRTYMFLNVFEYVSIWSLFKYQSLLVSSGANLYASGSGPQQT  QSFTSQDWPFYSLFQVNSNYVLNGFSGARLSNTFPNIVGLPGSTTTHALLAARVNY  SGGISSGDIGASPFNQNFNCSTFLPPLLTPFVRSWLDSGSDREGVATVTNWQTESF  ETTLGLRSGAFTARGNSNYFPDYFIRNISGVPLVVRNEDLRRPLHYNEIRNIASPSGT  PGGARAYMVSVHNRKNNIHAVHENGSMIHLAPNDYTGFTISPIHATQVNNQTRTFIS  EKFGNQGDSLRFEQNNTTARYTLRGNGNSYNLYLRVSSIGNSTIRVTINGRVYTATN</p>

 Tel: 1-631-559-9269    1-516-512-3133

 Email: [info@creative-biomart.com](mailto:info@creative-biomart.com)     Fax: 1-631-938-8127

 45-1 Ramsey Road, Shirley, NY 11967, USA

VNTTTNNDGVNDNGARFSDINIGNVVASSNSDVPLDINVTLNSGTQFDLMNIMLVPT  
NISPLY

**Purity**

95%

**Applications**

Enzyme-linked immunosorbent assay; Biological test; Gastric toxicity test in mice

**Storage**

Store at -20 centigrade. Avoid repeated freeze thaw cycles.

**Shipping**

The product is shipped at 4 centigrade.

## GENE INFORMATION

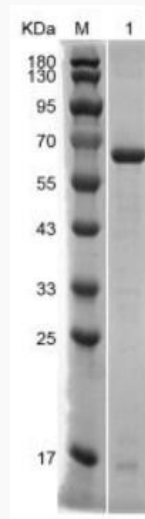
**Official Symbol**

cry2Ab

**UniProt ID**


[P21254](#)

**SDS-PAGE**



 Tel: 1-631-559-9269 1-516-512-3133

 Email: [info@creative-biomart.com](mailto:info@creative-biomart.com)  Fax: 1-631-938-8127

 45-1 Ramsey Road, Shirley, NY 11967, USA