

Recombinant Rat Cryaa protein, His-tagged

Cat. No. Cryaa-4568R **Lot. No.** (See product label)

SPECIFICATION

Product Overview	Recombinant Rat Cryaa protein(P24623)(1-196 aa), fused with C-terminal His tag, was expressed in E.coli.
Species	Rat
Source	E.coli
ProteinLength	1-196 aa
Form	For liquid formulations, the standard storage buffer consists of a Tris or PBS based solution supplemented with 5-50% glycerol. When provided as lyophilized powder, the product undergoes freeze-drying from a Tris- or PBS-based formulation containing 6% trehalose, adjusted to pH 8.0 prior to the lyophilization process.
Molecular Mass	29.4 kDa
AASequence	MDVTIQHPWFKRALGPFYPSRLFDQFFGEGLEFYDLLPFLSSTISPYRQSLFRTVLD SGISELMTHMWFVMHQPHAGNPKNNPGKVRSDRDKFVIFLDVKHFSPEDLTVKYLE DFVEIHGKHNERQDDHGYSISREFHRRYRLPSNVDQSALSCSLSadGMLTFSGPKVQ SGLDAGHSERAIPVSREEKPSSAPSS
Purity	Greater than 95% as determined by SDS-PAGE.
Storage	Store at -20°C/-80°C upon receipt, aliquoting is necessary for mutiple use. Avoid repeated freeze-thaw cycles.

 Tel: 1-631-559-9269 1-516-512-3133

 Email: info@creative-biomart.com  Fax: 1-631-938-8127

 45-1 Ramsey Road, Shirley, NY 11967, USA

Reconstitution Please reconstitute protein in deionized sterile water to a concentration of 0.1-1.0 mg/mL. Aliquot for long-term storage at -80°C.

GENE INFORMATION

Gene Name *Cryaa crystallin, alpha A [Rattus norvegicus]*

Official Symbol *Cryaa*

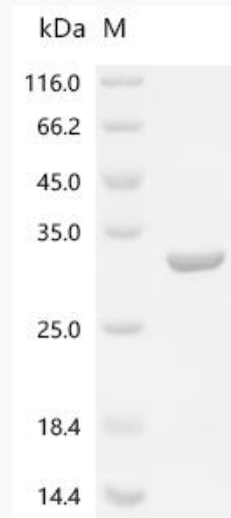
Synonyms CRYAA; crystallin, alpha A; alpha-crystallin A chain; Crystallin, alpha polypeptide A; Crya1; Acry-1;

Gene ID [24273](#)

mRNA Refseq [NM_012534](#)

Protein Refseq [NP_036666](#)

SDS-PAGE



 Tel: 1-631-559-9269 1-516-512-3133

 Email: info@creative-biomart.com  Fax: 1-631-938-8127

 45-1 Ramsey Road, Shirley, NY 11967, USA