

Recombinant Mouse Cryaa Protein

Cat. No. Cryaa-7175M **Lot. No.** (See product label)

SPECIFICATION

Product Overview	Recombinant mouse Crystallin alpha A / CRYAA protein without tag was expressed in E. coli.
Species	Mouse
Source	E.coli
ProteinLength	1-175
Description	This gene encodes subunit a, one of two subunits of alpha-crystallin, which is a high molecular weight, soluble aggregate and is a member of the small heat shock protein (sHSP) family. The encoded protein has been identified as a moonlighting protein based on its ability to perform mechanistically distinct functions. It acts as a molecular chaperone and is the major protein in the eye lens, maintaining the transparency and refractive index of the lens. In mouse, deficiency in this gene is associated with smaller lenses and eyes and with increasing lens opacity with age. Alternative splicing results in multiple transcript variants.
Form	Liquid
Molecular Mass	20 kDa
AA Sequence	MDIAIHHPWIRRPFFPFHSPSRLFDQFFGEHLLESDFSTATSLSPFYLRPPSFLRAP SWIDTGLSEMRLEKDRFSVNLVDVKHFSPEELKVKVLGDVIEVHGKHEERQDEHGFIS REFHRKYRIPADVDPDPLTITSSLSSDGVLTVNGPRKQVSGPERTIPITREEKPAVAAAP

 Tel: 1-631-559-9269 1-516-512-3133

 Email: info@creative-biomart.com  Fax: 1-631-938-8127

 45-1 Ramsey Road, Shirley, NY 11967, USA

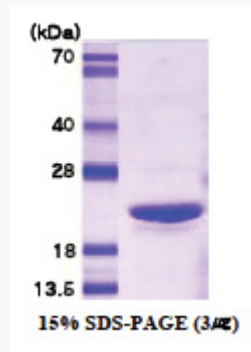
	KK
Purity	> 95 % > 95 % by SDS PAGE
Stability	Shelf life: one year from despatch.
Storage	Store (in aliquots) at -20 centigrade. Avoid repeated freezing and thawing.
Concentration	1.0 mg/mL
Storage Buffer	20 mM Tris pH 8.0 and 10 % glycerol
GENE INFORMATION	
Gene Name	Cryaa crystallin, alpha A [Mus musculus (house mouse)]
Official Symbol	Cryaa
Synonyms	Cryaa; crystallin, alpha A; Cry; Acry; Crya; Crya1; DAcry; lop18; Acry-1; Crya-1; DAcry-1; alpha-crystallin A chain; crystallin, alpha 1; lens opacity 18
Gene ID	12954
mRNA Refseq	NM_001278569
Protein Refseq	NP_001265498
UniProt ID	Q569M7

 Tel: 1-631-559-9269 1-516-512-3133

 Email: info@creative-biomart.com  Fax: 1-631-938-8127

 45-1 Ramsey Road, Shirley, NY 11967, USA

SDS-PAGE



 Tel: 1-631-559-9269 1-516-512-3133

 Email: info@creative-biomart.com  Fax: 1-631-938-8127

 45-1 Ramsey Road, Shirley, NY 11967, USA