

Recombinant Mouse Cryba1 protein, His & T7-tagged

Cat. No. Cryba1-1444M Lot. No. (See product label)

SPECIFICATION

Product Overview	Recombinant Mouse Cryba1 aa. (Met1~Gln215 (Accession # P02525) fused with N-terminal His & T7 tag was produced in E. coli cells.
Species	Mouse
Source	E.coli
ProteinLength	Met1~Gln215
Description	Mammalian lens crystallins are divided into alpha, beta, and gamma families. Alpha and beta families are further divided into acidic and basic groups. Seven protein regions exist in crystallins: four homologous motifs, a connecting peptide, and N- and C-terminal extensions. Beta-crystallins, the most heterogeneous, differ by the presence of the C-terminal extension (present in the basic group, none in the acidic group). Beta-crystallins form aggregates of different sizes and are able to self-associate to form dimers or to form heterodimers with other beta-crystallins. This gene, a beta acidic group member, encodes two proteins (crystallin, beta A3 and crystallin, beta A1) from a single mRNA. Two transcript variants encoding different isoforms have been found for this gene.
Form	Freeze-dried powder
Molecular Mass	Predicted Molecular Mass: 28.9kDa.
Endotoxin	<1.0EU per 1g (determined by the LAL method)

 Tel: 1-631-559-9269 1-516-512-3133

 Email: info@creative-biomart.com  Fax: 1-631-938-8127

 45-1 Ramsey Road, Shirley, NY 11967, USA

Purity	>95%
Characteristic	The isoelectric point is 6.0.
Applications	SDS-PAGE; WB; ELISA; IP.
Stability	The thermal stability is described by the loss rate of the target protein. The loss rate was determined by accelerated thermal degradation test, that is, incubate the protein at 37°C for 48h, and no obvious degradation and precipitation were observed. (Referring from China Biological Products Standard, which was calculated by the Arrhenius equation.) The loss of this protein is less than 5% within the expiration date under appropriate storage condition.
Storage	Avoid repeated freeze/thaw cycles. Store at 2-8°C for one month. Aliquot and store at -80°C for 12 months.
Storage buffer	Supplied as lyophilized form in PBS, pH7.4, containing 5% trehalose, 0.01% sarcosyl.
Reconstitution	Reconstitute in sterile PBS, pH7.2-pH7.4.

GENE INFORMATION

Gene Name	Cryba1 crystallin, beta A1 [Mus musculus (house mouse)]
Official Symbol	Cryba1
Synonyms	Cryba1; crystallin, beta A1; Cryb; BA3/A1; beta-crystallin A1; beta-A1-crystallin; beta-A3/A1-crystallin
Gene ID	12957

 Tel: 1-631-559-9269 1-516-512-3133

 Email: info@creative-biomart.com  Fax: 1-631-938-8127

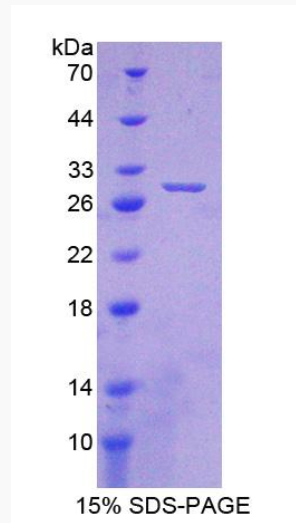
 45-1 Ramsey Road, Shirley, NY 11967, USA

mRNA Refseq [NM_001313933.1](#)

Protein Refseq [NP_001300862.1](#)

UniProt ID [P02525](#)

SDS-PAGE



 Tel: 1-631-559-9269 1-516-512-3133

 Email: info@creative-biomart.com  Fax: 1-631-938-8127

 45-1 Ramsey Road, Shirley, NY 11967, USA