

Recombinant Mouse Crybb1 protein, His & GST-tagged

Cat. No. Crybb1-1445M Lot. No. (See product label)

SPECIFICATION

Product Overview	Recombinant Mouse Crybb1 aa. (Lys6~Val186 (Accession # Q9WVJ5) fused with N-terminal His & GST tag was produced in E. coli cells.
Species	Mouse
Source	E.coli
ProteinLength	Lys6~Val186
Description	This gene encodes a member of the crystallin family of proteins that contribute to the transparency and refractive properties of the ocular lens. The encoded protein associates with other beta crystallin proteins to form dimers, tetramers and other higher-order complexes. This gene is located adjacent to a related crystallin gene on chromosome 5. Alternative splicing results in multiple transcript variants.
Form	Freeze-dried powder
Molecular Mass	Predicted Molecular Mass: 49.9kDa.
Endotoxin	<1.0EU per 1g (determined by the LAL method)
Purity	>90%
Characteristic	The isoelectric point is 5.9.

 Tel: 1-631-559-9269 1-516-512-3133

 Email: info@creative-biomart.com  Fax: 1-631-938-8127

 45-1 Ramsey Road, Shirley, NY 11967, USA

Applications	SDS-PAGE; WB; ELISA; IP.
Stability	The thermal stability is described by the loss rate of the target protein. The loss rate was determined by accelerated thermal degradation test, that is, incubate the protein at 37°C for 48h, and no obvious degradation and precipitation were observed. (Referring from China Biological Products Standard, which was calculated by the Arrhenius equation.) The loss of this protein is less than 5% within the expiration date under appropriate storage condition.
Storage	Avoid repeated freeze/thaw cycles. Store at 2-8°C for one month. Aliquot and store at -80°C for 12 months.
Storage buffer	Supplied as lyophilized form in PBS, pH7.4, containing 5% trehalose, 0.01% sarcosyl.
Reconstitution	Reconstitute in sterile PBS, pH7.2-pH7.4.

GENE INFORMATION

Gene Name	Crybb1 crystallin, beta B1 [Mus musculus (house mouse)]
Official Symbol	Crybb1
Synonyms	Crybb1; crystallin, beta B1; BB1CRY; 3110006K12Rik; beta-crystallin B1
Gene ID	12960
mRNA Refseq	NM_001312893.1
Protein Refseq	NP_001299822.1
UniProt ID	Q9WVJ5

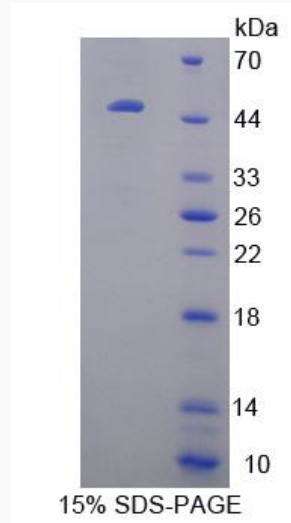
 Tel: 1-631-559-9269 1-516-512-3133

 Email: info@creative-biomart.com  Fax: 1-631-938-8127

 45-1 Ramsey Road, Shirley, NY 11967, USA



SDS-PAGE



Tel: 1-631-559-9269 1-516-512-3133

Email: info@creative-biomart.com Fax: 1-631-938-8127

45-1 Ramsey Road, Shirley, NY 11967, USA