

Recombinant Rat Crybb2 Protein, His-tagged

Cat. No. Crybb2-853R **Lot. No.** (See product label)

SPECIFICATION

Product Overview	Recombinant Rat Crybb2 Protein (Pro17-Arg191) with His tag was expressed in E. coli.
Species	Rat
Source	E.coli
ProteinLength	Pro17-Arg191
Description	Predicted to enable identical protein binding activity. Predicted to be a structural constituent of eye lens. Involved in camera-type eye development. Human ortholog(s) of this gene implicated in cataract and cataract 3 multiple types. Orthologous to human CRYBB2 (crystallin beta B2).
Form	Freeze-dried powder
Molecular Mass	Predicted Molecular Mass: 21.3 kDa; Accurate Molecular Mass: 23 kDa
Purity	> 97%
Applications	Positive Control; Immunogen; SDS-PAGE; WB.
Stability	The thermal stability is described by the loss rate. The loss rate was determined by accelerated thermal degradation test, that is, incubate the protein at 37 centigrade for 48h, and no obvious degradation and precipitation were observed. The loss rate is

 Tel: 1-631-559-9269 1-516-512-3133

 Email: info@creative-biomart.com  Fax: 1-631-938-8127

 45-1 Ramsey Road, Shirley, NY 11967, USA

less than 5% within the expiration date under appropriate storage condition.

Storage

Avoid repeated freeze/thaw cycles. Store at 2-8 centigrade for one month. Aliquot and store at -80 centigrade for 12 months.

Storage Buffer

20mM Tris, 150mM NaCl, pH8.0, containing 1mM EDTA, 1mM DTT, 0.01% SKL, 5% Trehalose and Proclin300.

Reconstitution

Reconstitute in 20mM Tris, 150mM NaCl (pH8.0) to a concentration of 0.1-1.0 mg/mL. Do not vortex.

GENE INFORMATION

Gene Name

Crybb2 crystallin, beta B2 [*Rattus norvegicus* (Norway rat)]

Official Symbol

Crybb2

Synonyms

CRYBB2; crystallin, beta B2; beta-crystallin B2; beta-B2 crystallin; beta-crystallin Bp; *R.norvegicus* CRYBB2 gene (crystallin, beta B2);

Gene ID

25422

mRNA Refseq

NM_012937

Protein Refseq

NP_037069

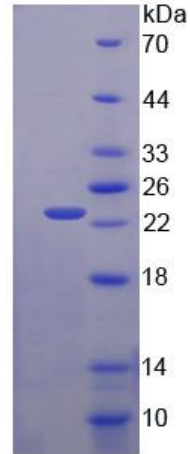
UniProt ID

P62697

 Tel: 1-631-559-9269 1-516-512-3133

 Email: info@creative-biomart.com  Fax: 1-631-938-8127

 45-1 Ramsey Road, Shirley, NY 11967, USA



15% SDS-PAGE

 Tel: 1-631-559-9269 1-516-512-3133

 Email: info@creative-biomart.com  Fax: 1-631-938-8127

 45-1 Ramsey Road, Shirley, NY 11967, USA