

## Recombinant Mouse Crygd Protein, His-tagged

**Cat. No.** Crygd-223M    **Lot. No.** (See product label)

### SPECIFICATION

<b>Product Overview</b>	Recombinant Mouse Crygd(1-174aa) fused with His tag at N-terminal was expressed in E. coli.
<b>Species</b>	Mouse
<b>Source</b>	E.coli
<b>ProteinLength</b>	1-174aa
<b>Description</b>	Crygd, also known as gamma-crystallin D, belongs to the beta/gamma-crystallin family. Crystallins are the dominant structural components of the vertebrate eye lens. Mammalian lens crystallins are divided into alpha, beta, and gamma families. Gamma-crystallins have been involved in cataract formation. Defects in Crygd are a cause of cataract autosomal dominant (ADC), cataract congenital non-nuclear polymorphic autosomal dominant (CCP), cataract congenital cerulean type 3 (CCA3) and cataract crystalline aculeiform (CACA).
<b>Form</b>	Liquid. In 20mM Tris-HCl(pH8.0) containing 0.1M NaCl, 10% glycerol
<b>Molecular Mass</b>	23.5 kDa (197aa) Confirmed by MALDI-TOF
<b>AA Sequence</b>	MGSSHHHHHH SGLVPRGSH MGSMGKITFY EDGRFQGRHY ECSTDHNSLQ PYFSRCNSVR VDSGCWMLYE QPNFTGCQYF LRRGDYPDYQ QWMGFSDSVR SCRLIPHAGS HRIRLYEREE YRGQMIEFTE DCPSLQDRFH FNEIYSLNVL EGCWVLYDMT NYRGRQYLLR PGEYRRYHDW

 Tel: 1-631-559-9269    1-516-512-3133

 Email: [info@creative-biomart.com](mailto:info@creative-biomart.com)     Fax: 1-631-938-8127

 45-1 Ramsey Road, Shirley, NY 11967, USA

GAMNARVGSL RRVMDFY

**Purity** > 95% by SDS - PAGE

**Applications** SDS-PAGE

**Storage** Can be stored at +4 centigrade short term (1-2 weeks). For long term storage, aliquot and store at -20 centigrade or -70 centigrade. Avoid repeated freezing and thawing cycles.

**Concentration** 1mg/ml (determined by Absorbance at 280nm)

## GENE INFORMATION

**Gene Name** [Crygd crystallin, gamma D \[ Mus musculus \]](#)

**Official Symbol** [Crygd](#)

**Synonyms** CRYGD; crystallin, gamma D; gamma-crystallin D; lens opacity 12; gamma-D-crystallin; gamma-crystallin 1; Aey4; Lop12; Cryg-1; DGcry-1;

**Gene ID** [12967](#)

**mRNA Refseq** [NM\\_007776](#)

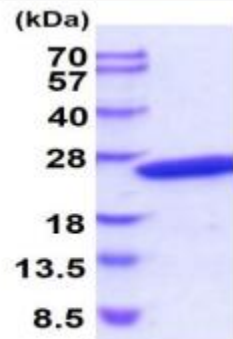
**Protein Refseq** [NP\\_031802](#)

**UniProt ID** [P04342](#)

 Tel: 1-631-559-9269 1-516-512-3133

 Email: [info@creative-biomart.com](mailto:info@creative-biomart.com)  Fax: 1-631-938-8127

 45-1 Ramsey Road, Shirley, NY 11967, USA



15% SDS-PAGE (3ug)

Tel: 1-631-559-9269 1-516-512-3133

Email: [info@creative-biomart.com](mailto:info@creative-biomart.com) Fax: 1-631-938-8127

45-1 Ramsey Road, Shirley, NY 11967, USA