

Recombinant Rat Csf1 protein, His-KSI-tagged

Cat. No. Csf1-1342R Lot. No. (See product label)

SPECIFICATION

Product Overview	Recombinant Rat Csf1 protein(Q8JZQ0)(156-360aa), fused with N-terminal His and KSI tag, was expressed in E.coli.
Species	Rat
Source	E.coli
ProteinLength	156-360aa
Form	If the delivery form is liquid, the default storage buffer is Tris/PBS-based buffer, 5%-50% glycerol. If the delivery form is lyophilized powder, the buffer before lyophilization is Tris/PBS-based buffer, 6% Trehalose, pH 8.0.
Molecular Mass	37.5 kDa
Purity	Greater than 85% as determined by SDS-PAGE.
Storage	Store at -20°C/-80°C upon receipt, aliquoting is necessary for mutiple use. Avoid repeated freeze-thaw cycles.
Reconstitution	We recommend that this vial be briefly centrifuged prior to opening to bring the contents to the bottom. Please reconstitute protein in deionized sterile water to a concentration of 0.1-1.0 mg/mL. We recommend to add 5-50% of glycerol (final concentration) and aliquot for long-term storage at -20°C/-80°C.

 Tel: 1-631-559-9269 1-516-512-3133

 Email: info@creative-biomart.com  Fax: 1-631-938-8127

 45-1 Ramsey Road, Shirley, NY 11967, USA



AA Sequence

KNFLEKDOWNIFSKNCNDSFAKCSSRDVVTKPDCNCLYPKATPSSDLASASPHQPPA
PSMAPLADLAWDDSQRTEGSSLLPSDLPLRIEDPGSAKQRPPRSTCQTLESTEQPN
HEDPQPHPSAGAPIPGVEDIIESSMGTNWVLEEASGEASEGFLTQERKFSPSNPVG
GSIQAETDRPWARSASSPFPKLTEDQQPTNITDTPLT

GENE INFORMATION

Gene Name [Csf1 colony stimulating factor 1 \(macrophage\) \[Rattus norvegicus \]](#)

Official Symbol [Csf1](#)

Synonyms CSF1; colony stimulating factor 1 (macrophage); macrophage colony-stimulating factor 1; MCSF; CSF-1;

Gene ID [78965](#)

mRNA Refseq [NM_023981](#)

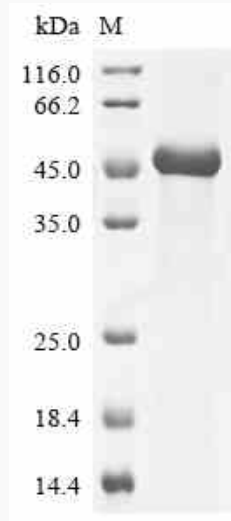
Protein Refseq [NP_076471](#)

Tel: 1-631-559-9269 1-516-512-3133

Email: info@creative-biomart.com Fax: 1-631-938-8127

45-1 Ramsey Road, Shirley, NY 11967, USA

SDS-PAGE



 Tel: 1-631-559-9269 1-516-512-3133

 Email: info@creative-biomart.com  Fax: 1-631-938-8127

 45-1 Ramsey Road, Shirley, NY 11967, USA