

Recombinant Rat Csf1 Protein, His&GST-tagged

Cat. No. Csf1-2161R **Lot. No.** (See product label)

SPECIFICATION

Product Overview	Recombinant Rat Csf1 Protein (Glu261-Leu427) with a N-His&GST tag was expressed in E. coli.
Species	Rat
Source	E.coli
ProteinLength	Glu261-Leu427
Description	Enables identical protein binding activity. Involved in several processes, including myeloid leukocyte differentiation; odontogenesis; and ossification. Located in extracellular space. Used to study anti-basement membrane glomerulonephritis; high grade glioma; and osteopetrosis. Biomarker of systemic scleroderma. Human ortholog(s) of this gene implicated in interstitial cystitis. Orthologous to human CSF1 (colony stimulating factor 1).
Form	Freeze-dried powder
Molecular Mass	Predicted Molecular Mass: 48.1 kDa Accurate Molecular Mass: 48 kDa
Endotoxin	<1.0 EU per 1g (determined by the LAL method).
Purity	> 97%

 Tel: 1-631-559-9269 1-516-512-3133

 Email: info@creative-biomart.com  Fax: 1-631-938-8127

 45-1 Ramsey Road, Shirley, NY 11967, USA

Applications	Positive Control; Immunogen; SDS-PAGE; WB.
Stability	The thermal stability is described by the loss rate. The loss rate was determined by accelerated thermal degradation test, that is, incubate the protein at 37 centigrade for 48h, and no obvious degradation and precipitation were observed. The loss rate is less than 5% within the expiration date under appropriate storage condition.
Storage	Avoid repeated freeze/thaw cycles. Store at 2-8 centigrade for one month. Aliquot and store at -80 centigrade for 12 months.
Storage Buffer	20mM Tris, 150mM NaCl, pH8.0, containing 1mM EDTA, 1mM DTT, 0.01% SKL, 5% Trehalose and Proclin300.
Reconstitution	Reconstitute in ddH ₂ O to a concentration of 0.1-0.5 mg/mL. Do not vortex.
GENE INFORMATION	
Gene Name	Csf1 colony stimulating factor 1 [<i>Rattus norvegicus</i> (Norway rat)]
Official Symbol	Csf1
Synonyms	Csf1; colony stimulating factor 1; macrophage colony-stimulating factor 1 CSF-1 MCSF colony stimulating factor 1 (macrophage) EC 2.7.10.1
Gene ID	78965
mRNA Refseq	NM_023981

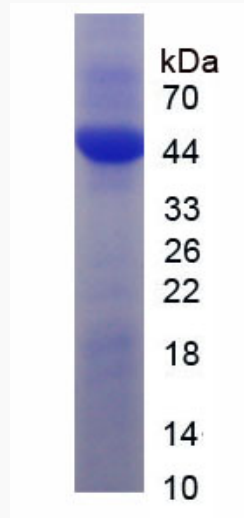
 Tel: 1-631-559-9269 1-516-512-3133

 Email: info@creative-biomart.com  Fax: 1-631-938-8127

 45-1 Ramsey Road, Shirley, NY 11967, USA

Protein Refseq NP_076471

UniProt ID Q6GMN4



Tel: 1-631-559-9269 1-516-512-3133

Email: info@creative-biomart.com Fax: 1-631-938-8127

45-1 Ramsey Road, Shirley, NY 11967, USA