

Recombinant Active Mouse CSF1 Protein, His-tagged(C-ter)

Cat. No. Csf1-46M Lot. No. (See product label)

SPECIFICATION

Product Overview	Recombinant Active Mouse CSF1 Protein with His tag (C-ter) was expressed in E. coli.
Species	Mouse
Source	E.coli
Description	The protein encoded by this gene is a cytokine that controls the production, differentiation, and function of macrophages. The active form of the protein is found extracellularly as a disulfide-linked homodimer, and is thought to be produced by proteolytic cleavage of membrane-bound precursors. The encoded protein may be involved in development of the placenta. Alternate splicing results in multiple transcript variants. [provided by RefSeq, Sep 2011]
Form	Powder
Bio-activity	Determined by its ability to induce proliferation in NFS-60 cells. The ED50 for this effect is < 2 ng/mL. The specific activity of recombinant mouse M-CSF is approximately > 5x 10 ⁵ IU/mg.
AA Sequence	MKEVSEHCSHMIGNHGLKVLQQLIDSQMETSCQIAFEFVDQEQLDDPVCYLKKAFFL VQDIIDETMRFKDNTPNANATERLQELSNLNSCFTKDYEEQNKACVRTFHETPLQL LEKIKNFFDETKNLLEKDOWNIFTKNCNNSFAKCSSRDVVTKP
Endotoxin	Endotoxin level is less than 0.1 EU/μg of the protein, as determined by the LAL test.

 Tel: 1-631-559-9269 1-516-512-3133

 Email: info@creative-biomart.com  Fax: 1-631-938-8127

 45-1 Ramsey Road, Shirley, NY 11967, USA


Purity	> 98% (by SDS-PAGE)
Applications	SDS-PAGE
Notes	For laboratory research only, not for drug, diagnostic or other use.
Storage	Lyophilized protein should be stored at -20°C. After reconstitution, aliquot and store at -20°C or -80°C for up to one month. Storage in frost free freezers is not recommended. Avoid repeated freeze/thaw cycles. Suggest spin the vial prior to opening.
Storage Buffer	PBS (pH 8.0)
Reconstitution	It is recommended to reconstitute the lyophilized protein in sterile water to a concentration not less than 100 µg/mL and incubate the stock solution for at least 20 min at room temperature to make sure the protein is dissolved completely.

GENE INFORMATION

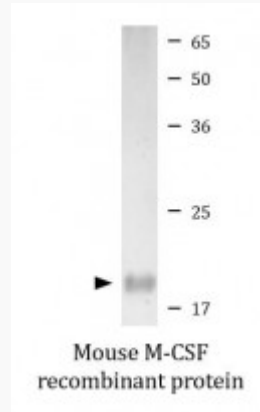
Gene Name	Csf1 colony stimulating factor 1 (macrophage) [<i>Mus musculus</i>]
Official Symbol	Csf1
Synonyms	CSF1; colony stimulating factor 1 (macrophage); macrophage colony-stimulating factor 1; osteopetrosis; op; Csfm; MCSF; C87615;
Gene ID	12977
mRNA Refseq	NM_001113529
Protein Refseq	NP_001107001

 Tel: 1-631-559-9269 1-516-512-3133

 Email: info@creative-biomart.com  Fax: 1-631-938-8127

 45-1 Ramsey Road, Shirley, NY 11967, USA

SDS-PAGE



 Tel: 1-631-559-9269 1-516-512-3133

 Email: info@creative-biomart.com  Fax: 1-631-938-8127

 45-1 Ramsey Road, Shirley, NY 11967, USA