

## Recombinant Rat Csf1 Protein (Gln33-Arg254)

**Cat. No.** Csf1-6845R    **Lot. No.** (See product label)

### SPECIFICATION

<b>Product Overview</b>	Recombinant rat Csf1 (Gln33-Arg254) without tag was expressed in mammalian cells.
<b>Species</b>	Rat
<b>Source</b>	Mammalian Cells
<b>ProteinLength</b>	Gln33-Arg254
<b>Description</b>	Enables identical protein binding activity. Involved in several processes, including myeloid leukocyte differentiation; odontogenesis; and ossification. Located in extracellular space. Used to study anti-basement membrane glomerulonephritis; high grade glioma; and osteopetrosis. Biomarker of systemic scleroderma. Human ortholog (s) of this gene implicated in interstitial cystitis. Orthologous to human CSF1 (colony stimulating factor 1).
<b>Form</b>	Lyophilized powder/frozen liquid
<b>Molecular Mass</b>	24.42 kDa
<b>Purity</b>	> 90 % as determined by SDS-PAGE
<b>Notes</b>	For research use only.
<b>Storage</b>	Use a manual defrost freezer and avoid repeated freeze thaw cycles. Store at 2 to 8 centigrade for one week. Store at -20 to -80 centigrade for twelve months from the

 Tel: 1-631-559-9269    1-516-512-3133

 Email: [info@creative-biomart.com](mailto:info@creative-biomart.com)     Fax: 1-631-938-8127

 45-1 Ramsey Road, Shirley, NY 11967, USA

date of receipt.

**Storage Buffer** Supplied as solution form in PBS or lyophilized from PBS.

**Reconstitution** Reconstitute in sterile water for a stock solution.

**Shipping** They are shipped out with dry ice/blue ice unless customers require otherwise.

## GENE INFORMATION

**Gene Name** [Csf1 colony stimulating factor 1 \[ Rattus norvegicus \(Norway rat\) \]](#)

**Official Symbol** [Csf1](#)

**Synonyms** Csf1; colony stimulating factor 1; PG-M-CSF; macrophage colony-stimulating factor 1; CSF-1; MCSF; colony stimulating factor 1 (macrophage); proteoglycan macrophage colony-stimulating factor; EC 2.7.10.1

**Gene ID** [78965](#)

**mRNA Refseq** [NM\\_023981](#)

**Protein Refseq** [NP\\_076471](#)

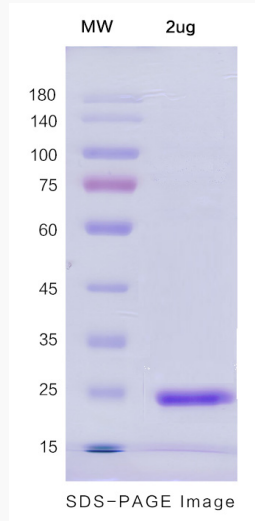
**UniProt ID** [Q8JZQ0](#)

 Tel: 1-631-559-9269 1-516-512-3133

 Email: [info@creative-biomart.com](mailto:info@creative-biomart.com)  Fax: 1-631-938-8127

 45-1 Ramsey Road, Shirley, NY 11967, USA

**SDS-PAGE**



 Tel: 1-631-559-9269 1-516-512-3133

 Email: [info@creative-biomart.com](mailto:info@creative-biomart.com)  Fax: 1-631-938-8127

 45-1 Ramsey Road, Shirley, NY 11967, USA