

Recombinant Mouse Csf1r Protein, GST-tagged

Cat. No. Csf1r-1966M Lot. No. (See product label)

SPECIFICATION

Product Overview	Mouse Csf1r partial ORF (NP_001032948.2, 133 a.a. - 241 a.a.) recombinant protein with GST-tag at N-terminal.
Species	Mouse
Source	Wheat Germ
Description	Protein tyrosine-kinase transmembrane receptor for CSF1 and IL34.
Molecular Mass	37.62 kDa
AA Sequence	ALKDSVSLMREGGRQVLRKTVYFFSPWRGFIIRKAKVLDSNTYVCKTMVNGRESTS TGIWLKVNVRVHPEPPQIKLEPSKLVRIERGEAAQIVCSATNAEVGFNVILKRGD
Applications	Enzyme-linked Immunoabsorbent Assay Western Blot (Recombinant protein) Antibody Production Protein Array
Notes	Best use within three months from the date of receipt of this protein.
Storage	Store at -80 centigrade. Aliquot to avoid repeated freezing and thawing.
Storage Buffer	50 mM Tris-HCl, 10 mM reduced Glutathione, pH=8.0 in the elution buffer.

 Tel: 1-631-559-9269 1-516-512-3133

 Email: info@creative-biomart.com  Fax: 1-631-938-8127

 45-1 Ramsey Road, Shirley, NY 11967, USA

GENE INFORMATION

Gene Name Csf1r colony stimulating factor 1 receptor [*Mus musculus*]

Official Symbol Csf1r

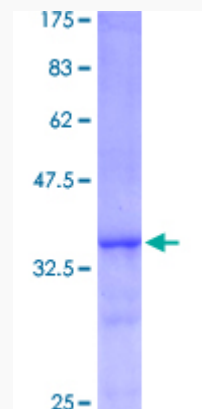
Synonyms CSF1R; colony stimulating factor 1 receptor; macrophage colony-stimulating factor 1 receptor; c-fms; CSF-1-R; CSF-1 receptor; proto-oncogene fms; proto-oncogene c-Fms; Fms; CD115; Csfmr; Fim-2; CSF-1R; M-CSFR; M-CSF-R; AI323359;

Gene ID 12978

mRNA Refseq NM_001037859

Protein Refseq NP_001032948

Quality Control Testing:



12.5% SDS-PAGE Stained with Coomassie Blue

 Tel: 1-631-559-9269 1-516-512-3133

 Email: info@creative-biomart.com  Fax: 1-631-938-8127

 45-1 Ramsey Road, Shirley, NY 11967, USA