

## Recombinant Mouse Csf1r protein, His-tagged

**Cat. No.** Csf1r-4000M    **Lot. No.** (See product label)

### SPECIFICATION

<b>Product Overview</b>	Recombinant Mouse Csf1r protein(P09581)(Ala20-Ser511), fused with C-terminal His tag, was expressed in HEK293.
<b>Species</b>	Mouse
<b>Source</b>	HEK293
<b>ProteinLength</b>	Ala20-Ser511
<b>Tag</b>	C-His
<b>Form</b>	Supplied as 0.22µm filtered solution in PBS (pH 7.4).
<b>Bio-activity</b>	Mouse M-CSF R, His tag captured on CM5 Chip via Anti-His Antibody can bind Human M-CSF, No tag with an affinity constant of 1.70 nM as determined in SPR assay (Biacore T200).
<b>Molecular Mass</b>	The protein has a predicted MW of 56.3 kDa. Due to glycosylation, the protein migrates to 76-82 kDa based on Tris-Bis PAGE result.
<b>Endotoxin</b>	Less than 1EU per µg by the LAL method.
<b>Purity</b>	> 95% as determined by Tris-Bis PAGE
<b>Storage</b>	Valid for 12 months from date of receipt when stored at -80°C. Recommend to aliquot

 Tel: 1-631-559-9269    1-516-512-3133

 Email: [info@creative-biomart.com](mailto:info@creative-biomart.com)     Fax: 1-631-938-8127

 45-1 Ramsey Road, Shirley, NY 11967, USA

the protein into smaller quantities for optimal storage. Please do not repeated freeze-thaw cycles.

**Reconstitution**

It is recommended that sterile water be added to the vial to prepare a stock solution of 0.2 ug/ul. Centrifuge the vial at 4°C before opening to recover the entire contents.

**GENE INFORMATION****Gene Name**

Csf1r colony stimulating factor 1 receptor [ *Mus musculus* ]

**Official Symbol**

Csf1r

**Synonyms**

CSF1R; colony stimulating factor 1 receptor; macrophage colony-stimulating factor 1 receptor; c-fms; CSF-1-R; CSF-1 receptor; proto-oncogene fms; proto-oncogene c-Fms; Fms; CD115; Csfmr; Fim-2; CSF-1R; M-CSFR; M-CSF-R; AI323359;

**Gene ID**

12978

**mRNA Refseq**

NM\_001037859

**Protein Refseq**

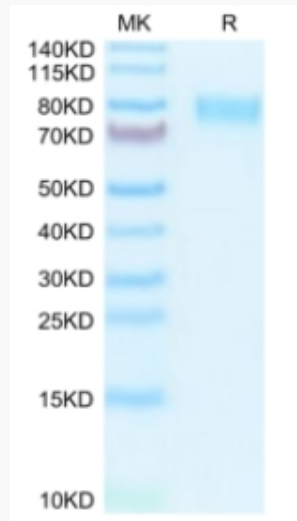
NP\_001032948

 Tel: 1-631-559-9269 1-516-512-3133

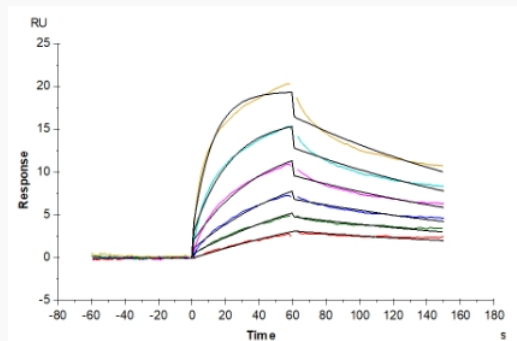
 Email: [info@creative-biomart.com](mailto:info@creative-biomart.com)  Fax: 1-631-938-8127

 45-1 Ramsey Road, Shirley, NY 11967, USA

Tris-Bis PAGE



SPR Data



Tel: 1-631-559-9269 1-516-512-3133

Email: [info@creative-biomart.com](mailto:info@creative-biomart.com) Fax: 1-631-938-8127

45-1 Ramsey Road, Shirley, NY 11967, USA