

Recombinant Mouse Csf2 Protein

Cat. No. Csf2-044M Lot. No. (See product label)

SPECIFICATION

Product Overview	Recombinant protein of Mus musculus colony stimulating factor 2 (granulocyte-macrophage) (Csf2) (Ala8-Lys141) without tag was expressed in E.coli.
Species	Mouse
Source	E.coli
ProteinLength	8-141 a.a.
Description	Cytokine that stimulates the growth and differentiation of hematopoietic precursor cells from various lineages, including granulocytes, macrophages, eosinophils and erythrocytes.
Molecular Mass	14.2 kDa
Endotoxin	< 0.1 EU per 1 g of the protein by the LAL
Purity	>95%, as determined by SDS-PAGE and Coomassie blue staining
Stability	Stable for 12 months from the date of receipt of the product under proper storage and handling conditions. Avoid repeated freeze-thaw cycles.
Storage	Store at -80 centigrade.
Storage Buffer	Lyophilized from a sterile solution containing 20 mM phosphate buffer, pH7.4.

 Tel: 1-631-559-9269 1-516-512-3133

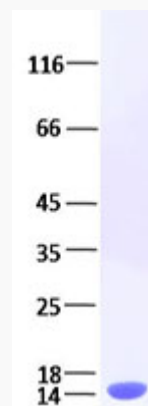
 Email: info@creative-biomart.com  Fax: 1-631-938-8127

 45-1 Ramsey Road, Shirley, NY 11967, USA

Reconstitution Resuspend the protein in the desired concentration in proper buffer.

GENE INFORMATION

Gene Name	Csf2 colony stimulating factor 2 (granulocyte-macrophage) [<i>Mus musculus</i> (house mouse)]
Official Symbol	Csf2
Synonyms	Csf2; colony stimulating factor 2 (granulocyte-macrophage); CSF; Csfgm; GMCSF; Gm-CSf; MGI-IGM; granulocyte-macrophage colony-stimulating factor; colony-stimulating factor; granulocyte-macrophage colony stimulating factor 2; put. GM-CSF
Gene ID	12981
mRNA Refseq	NM_009969
Protein Refseq	NP_034099
UniProt ID	P01587



 Tel: 1-631-559-9269 1-516-512-3133

 Email: info@creative-biomart.com  Fax: 1-631-938-8127

 45-1 Ramsey Road, Shirley, NY 11967, USA