

## Recombinant Rat Csf2 Protein, His-tagged

**Cat. No.** Csf2-1285R    **Lot. No.** (See product label)

### SPECIFICATION

<b>Product Overview</b>	Recombinant Rat Csf2 Protein (Ala18-Lys144) with N-His tag was expressed in E. coli.
<b>Species</b>	Rat
<b>Source</b>	E.coli
<b>ProteinLength</b>	Ala18-Lys144
<b>Description</b>	Enables cytokine activity. Involved in several processes, including cellular response to lipopolysaccharide; macrophage activation; and response to silicon dioxide. Located in extracellular space. Used to study Parkinsonism and myocardial infarction. Biomarker of abdominal aortic aneurysm; interstitial cystitis; and lung disease (multiple). Human ortholog(s) of this gene implicated in acute myeloid leukemia; juvenile myelomonocytic leukemia; neutropenia; pulmonary alveolar proteinosis; and visceral leishmaniasis. Orthologous to human CSF2 (colony stimulating factor 2).
<b>Form</b>	Freeze-dried powder
<b>Molecular Mass</b>	Predicted Molecular Mass: 44.5 kDa Accurate Molecular Mass: 45 kDa
<b>Purity</b>	> 95%
<b>Applications</b>	Cell culture; Activity Assays.

 Tel: 1-631-559-9269    1-516-512-3133

 Email: [info@creative-biomart.com](mailto:info@creative-biomart.com)     Fax: 1-631-938-8127

 45-1 Ramsey Road, Shirley, NY 11967, USA

<b>Stability</b>	The thermal stability is described by the loss rate. The loss rate was determined by accelerated thermal degradation test, that is, incubate the protein at 37 centigrade for 48h, and no obvious degradation and precipitation were observed. The loss rate is less than 5% within the expiration date under appropriate storage condition.
<b>Storage</b>	Avoid repeated freeze/thaw cycles. Store at 2-8 centigrade for one month. Aliquot and store at -80 centigrade for 12 months.
<b>Storage Buffer</b>	20mM Tris, 150mM NaCl, pH8.0, containing 1mM EDTA, 1mM DTT, 0.01% SKL, 5% Trehalose and Proclin300.
<b>Reconstitution</b>	Reconstitute in 20mM Tris, 150mM NaCl (pH8.0) to a concentration of 0.1-1.0 mg/mL. Do not vortex.

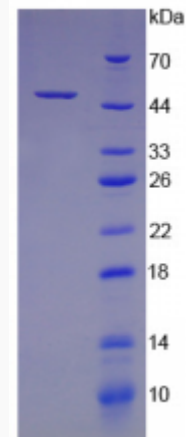
## GENE INFORMATION

<b>Gene Name</b>	<a href="#">Csf2 colony stimulating factor 2 [ Rattus norvegicus (Norway rat) ]</a>
<b>Official Symbol</b>	<a href="#">Csf2</a>
<b>Synonyms</b>	Csf2; colony stimulating factor 2; Gmcsf; Gm-csf; granulocyte-macrophage colony-stimulating factor; CSF; colony stimulating factor 2 (granulocyte-macrophage); colony-stimulating factor
<b>Gene ID</b>	<a href="#">116630</a>
<b>mRNA Refseq</b>	<a href="#">NM_053852</a>
<b>Protein Refseq</b>	<a href="#">NP_446304</a>
<b>UniProt ID</b>	<a href="#">P48750</a>

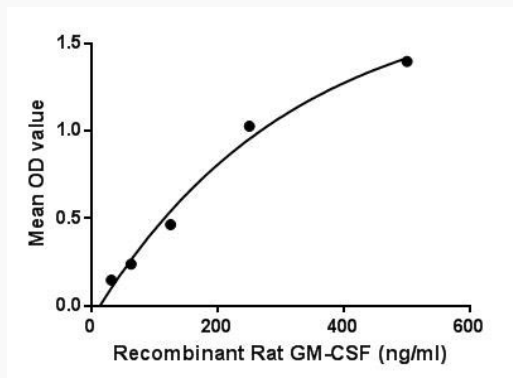
 Tel: 1-631-559-9269 1-516-512-3133

 Email: [info@creative-biomart.com](mailto:info@creative-biomart.com)  Fax: 1-631-938-8127

 45-1 Ramsey Road, Shirley, NY 11967, USA



The binding activity  
of GM-CSF with  
CSF2Ra.



 Tel: 1-631-559-9269 1-516-512-3133

 Email: [info@creative-biomart.com](mailto:info@creative-biomart.com)  Fax: 1-631-938-8127

 45-1 Ramsey Road, Shirley, NY 11967, USA