

## Recombinant Active Mouse CSF2 Protein, His-tagged(N-ter)

Cat. No. Csf2-49M Lot. No. (See product label)

### SPECIFICATION

<b>Product Overview</b>	Recombinant Active Mouse CSF2 Protein with His tag (N-ter) was expressed in E. coli.
<b>Species</b>	Mouse
<b>Source</b>	E.coli
<b>Description</b>	The protein encoded by this gene is a cytokine that controls the production, differentiation, and function of granulocytes and macrophages. The active form of the protein is found extracellularly as a homodimer. This gene has been localized to a cluster of related genes at chromosome region 5q31, which is known to be associated with interstitial deletions in the 5q- syndrome and acute myelogenous leukemia. Other genes in the cluster include those encoding interleukins 4, 5, and 13. [provided by RefSeq, Jul 2008]
<b>Form</b>	Powder
<b>Bio-activity</b>	Determined by its ability to induce proliferation in FDC-P1 cells. The ED50 for this effect is < 50 pg/ml. The specific activity of recombinant mouse GM-CSF is approximately > 2x 10 <sup>7</sup> IU/mg.
<b>AA Sequence</b>	APTRSPITVTRPWKHVEAIKEALNLLDDMPVTLNEEVEVVSNEFSFKKLTQVQTRLKI FEQGLRGNFTKLGALNMTASYQTYCPPTPETDCETQVTTYADFIDSLKTFLTDIPF ECKKPVQK

 Tel: 1-631-559-9269 1-516-512-3133

 Email: [info@creative-biomart.com](mailto:info@creative-biomart.com)  Fax: 1-631-938-8127

 45-1 Ramsey Road, Shirley, NY 11967, USA

<b>Endotoxin</b>	Endotoxin level is less than 0.1 EU/μg of the protein, as determined by the LAL test.
<b>Purity</b>	> 98% (by SDS-PAGE)
<b>Applications</b>	SDS-PAGE
<b>Notes</b>	For laboratory research only, not for drug, diagnostic or other use.
<b>Storage</b>	Lyophilized protein should be stored at -20°C. After reconstitution, aliquot and store at -20°C or -80°C for up to one month. Storage in frost free freezers is not recommended. Avoid repeated freeze/thaw cycles. Suggest spin the vial prior to opening.
<b>Storage Buffer</b>	PBS (pH 7.4)
<b>Reconstitution</b>	It is recommended to reconstitute the lyophilized protein in sterile water to a concentration not less than 100 μg/mL and incubate the stock solution for at least 20 min at room temperature to make sure the protein is dissolved completely.

## GENE INFORMATION

<b>Gene Name</b>	<a href="#">Csf2 colony stimulating factor 2 (granulocyte-macrophage) [ Mus musculus ]</a>
<b>Official Symbol</b>	<a href="#">Csf2</a>
<b>Synonyms</b>	CSF2; colony stimulating factor 2 (granulocyte-macrophage); granulocyte-macrophage colony-stimulating factor; CSF; put. GM-CSF; colony-stimulating factor; granulocyte-macrophage colony stimulating factor 2; Csfgm; GMCSF; Gm-CSf; MGI-IGM; MGC151255; MGC151257;
<b>Gene ID</b>	<a href="#">12981</a>

 Tel: 1-631-559-9269 1-516-512-3133

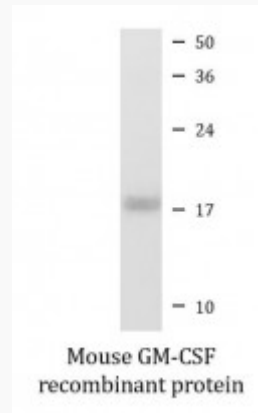
 Email: [info@creative-biomart.com](mailto:info@creative-biomart.com)  Fax: 1-631-938-8127

 45-1 Ramsey Road, Shirley, NY 11967, USA

mRNA Refseq [NM\\_009969](#)

Protein Refseq [NP\\_034099](#)

### SDS-PAGE



 Tel: 1-631-559-9269 1-516-512-3133

 Email: [info@creative-biomart.com](mailto:info@creative-biomart.com)  Fax: 1-631-938-8127

 45-1 Ramsey Road, Shirley, NY 11967, USA