

Recombinant Mouse Csf2 Protein

Cat. No. Csf2-7180M **Lot. No.** (See product label)

SPECIFICATION

Product Overview	Recombinant Mouse Csf2 Protein without tag was expressed in E. coli.
Species	Mouse
Source	E.coli
ProteinLength	18-141
Description	Cytokine that stimulates the growth and differentiation of hematopoietic precursor cells from various lineages, including granulocytes, macrophages, eosinophils and erythrocytes.
Form	Liquid
Molecular Mass	14 kDa
AA Sequence	MAPTRSPITVTRPWKHVEAIKEALNLLDDMPVTLNEEVEVVSNEFSFKKLTVCVQTRL KIFEQGLRGNFTKCLKGALNMTASYQTYCPPTPETDCETQVTTYADFIDSLKTFLTDI PFECKKPVQK
Purity	> 95 % by SDS-PAGE
Stability	Shelf life: one year from despatch.
Storage	Store undiluted at 2-8 centigrade for one week or (in aliquots) at -20 to -80 centigrade

 Tel: 1-631-559-9269 1-516-512-3133

 Email: info@creative-biomart.com  Fax: 1-631-938-8127

 45-1 Ramsey Road, Shirley, NY 11967, USA

for longer. Avoid repeated freezing and thawing.

Concentration 1.0 mg/mL (determined by Bradford assay)

Storage Buffer Phosphate Buffered Saline (pH 7.4) containing 10 % glycerol.

GENE INFORMATION

Gene Name [Csf2 colony stimulating factor 2 \(granulocyte-macrophage\) \[Mus musculus \(house mouse\) \]](#)

Official Symbol [Csf2](#)

Synonyms Csf2; colony stimulating factor 2 (granulocyte-macrophage); CSF; Csfg; GMCS; Csfgm; GMCSF; Gm-CS; MGI-I; Gm-CSf; MGI-IGM; granulocyte-macrophage colony-stimulating factor; colony-stimulating factor; granulocyte-macrophage colony stimulating factor 2; put. GM-CSF

Gene ID [12981](#)

mRNA Refseq [NM_009969](#)

Protein Refseq [NP_034099](#)

UniProt ID [P01587](#)

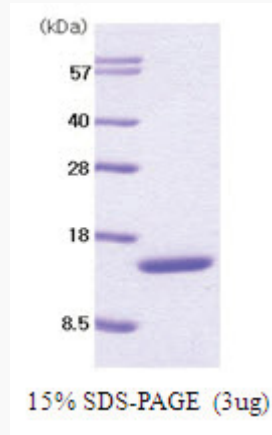
 Tel: 1-631-559-9269 1-516-512-3133

 Email: info@creative-biomart.com  Fax: 1-631-938-8127

 45-1 Ramsey Road, Shirley, NY 11967, USA



SDS-PAGE



Tel: 1-631-559-9269 1-516-512-3133

Email: info@creative-biomart.com Fax: 1-631-938-8127

45-1 Ramsey Road, Shirley, NY 11967, USA