

Recombinant Rat Csf2 protein

Cat. No. Csf2-94R Lot. No. (See product label)

SPECIFICATION

Product Overview	Recombinant Rat Csf2 protein was expressed in Escherichia coli.
Species	Rat
Source	E.coli
ProteinLength	127
Description	Granulocyte-Macrophage Colony Stimulating Factor (GM-CSF) is secreted by a number of different cell types (including activated T cells, B cells, macrophages, mast cells, endothelial cells and fibroblasts) in response to cytokine or immune and inflammatory stimulation. It was initially characterized as a growth factor that can support the in vitro colony formation of granulocyte-macrophage progenitors and has functions of stimulates the growth and differentiation of hematopoietic precursor cells from various lineages. GM-CSF has also been reported to have a functional role on non-hematopoietic cells and can induce human endothelial cells to migrate and proliferate. Additionally, it can stimulate the proliferation of a number of tumor cell lines, including osteogenic sarcoma, carcinoma and adenocarcinoma cell lines. It is reported that GM-CSF has no biological effects across species.
Form	Lyophilized from a 0.2µm filtered solution in PBS, pH 7.4.
Bio-activity	Fully biologically active when compared to standard. The ED50 as determined by a cell proliferation assay using murine FDC-P1 is less than 0.01 ng/ml, corresponding to a specific activity of > 1.0 ×

 Tel: 1-631-559-9269 1-516-512-3133

 Email: info@creative-biomart.com  Fax: 1-631-938-8127

 45-1 Ramsey Road, Shirley, NY 11967, USA

	10 ⁸ IU/mg.
Molecular Mass	Approximately 14.5 kDa, a single non-glycosylated polypeptide chain containing 127 amino acids.
AA Sequence	APTRSPNPVTRPWKHVDAIKEALSLLNDMRALENEKNEVDIISNEFSIQRPTCVQTR LKLYKQGLRGNLTKLNGALTMIA SHYQTNC PPTPETDCEIEVTTFFEDFIKNLKGFLFDI PFDCWKPVQK
Endotoxin	Less than 1 EU/μg of rRtGM-CSF as determined by LAL method.
Purity	>98% by SDS-PAGE and HPLC analysis.
Storage	Use a manual defrost freezer and avoid repeated freeze-thaw cycles. 12 months from date of receipt, -20 to -70 centigrade as supplied. 1 month, 2 to 8 centigrade under sterile conditions after reconstitution. 3 months, -20 to -70 centigrade under sterile conditions after reconstitution.
Reconstitution	We recommend that this vial be briefly centrifuged prior to opening to bring the contents to the bottom. Reconstitute in sterile distilled water or aqueous buffer containing 0.1 % BSA to a concentration of 0.1-1.0 mg/mL. Stock solutions should be apportioned into working aliquots and stored at ≤-20 centigrade. Further dilutions should be made in appropriate buffered solutions.

GENE INFORMATION

Gene Name	Csf2
Official Symbol	Csf2
Synonyms	Granulocyte/Macrophage Colony-Stimulating Factor, CSF-2, MGI-1GM, Pluripoietin-α

 Tel: 1-631-559-9269 1-516-512-3133

 Email: info@creative-biomart.com  Fax: 1-631-938-8127

 45-1 Ramsey Road, Shirley, NY 11967, USA

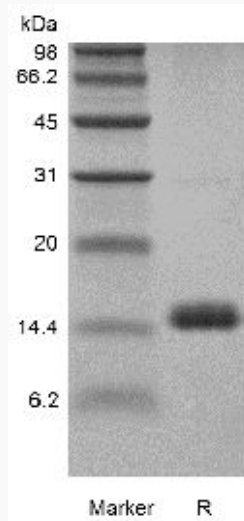
Gene ID 116630

mRNA Refseq NM_053852.1

Protein Refseq NP_446304.1

UniProt ID P48750

SDS-PAGE of Csf2-94R



 Tel: 1-631-559-9269 1-516-512-3133

 Email: info@creative-biomart.com  Fax: 1-631-938-8127

 45-1 Ramsey Road, Shirley, NY 11967, USA