

Recombinant Mouse Csf2ra protein, His-tagged

Cat. No. Csf2ra-628M **Lot. No.** (See product label)

SPECIFICATION

Product Overview	Recombinant Mouse Csf2ra protein(Q00941)(Leu30-Pro327), fused with C-terminal His tag, was expressed in HEK293.
Species	Mouse
Source	HEK293
ProteinLength	Leu30-Pro327
Tag	C-His
Form	Lyophilized from 0.22µm filtered solution in PBS (pH 7.4). Normally 5% trehalose is added as protectant before lyophilization.
Bio-activity	Immobilized Mouse GM-CSF R alpha, His Tag at 1µg/ml (100µl/well) on the plate. Dose response curve for Mouse GM-CSF, hFc Tag with the EC50 of 3.5ng/ml determined by ELISA.
Molecular Mass	The protein has a predicted MW of 33.1 kDa. Due to glycosylation, the protein migrates to 50-65 kDa based on Tris-Bis PAGE result.
Endotoxin	Less than 1EU per µg by the LAL method.
Purity	> 95% as determined by Tris-Bis PAGE; > 95% as determined by HPLC

 Tel: 1-631-559-9269 1-516-512-3133

 Email: info@creative-biomart.com  Fax: 1-631-938-8127

 45-1 Ramsey Road, Shirley, NY 11967, USA

Storage Reconstituted protein stable at -80°C for 12 months, 4°C for 1 week. Use a manual defrost freezer and avoid repeated freeze-thaw cycles.

Reconstitution Centrifuge tubes before opening. Reconstituting to a concentration more than 100 µg/ml is recommended. Dissolve the lyophilized protein in distilled water.

GENE INFORMATION

Gene Name [Csf2ra colony stimulating factor 2 receptor, alpha, low-affinity \(granulocyte-macrophage\) \[Mus musculus \]](#)

Official Symbol [Csf2ra](#)

Synonyms CSF2RA; colony stimulating factor 2 receptor, alpha, low-affinity (granulocyte-macrophage); granulocyte-macrophage colony-stimulating factor receptor subunit alpha; GMR-alpha; GM-CSFRalpha; GMCSFR-alpha; GM-CSF-R-alpha; colony stimulating factor 2 receptor alpha chain; CD116; Csfgmra; GM-CSFR; GM-CSF-Ra;

Gene ID [12982](#)

mRNA Refseq [NM_009970](#)

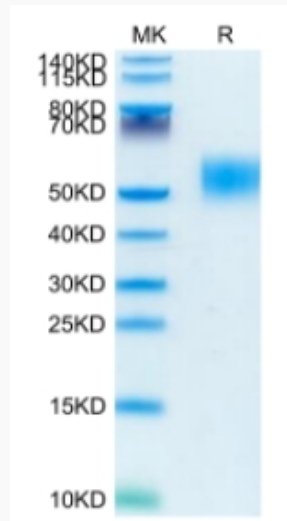
Protein Refseq [NP_034100](#)

 Tel: 1-631-559-9269 1-516-512-3133

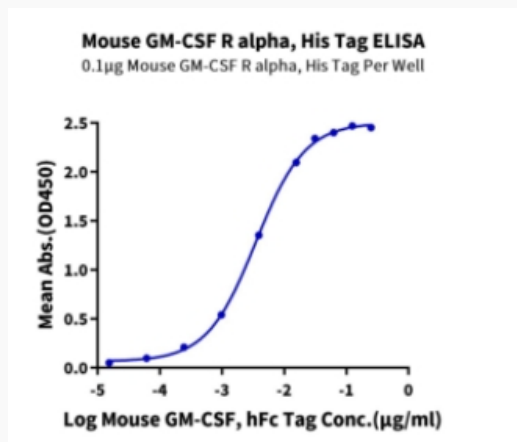
 Email: info@creative-biomart.com  Fax: 1-631-938-8127

 45-1 Ramsey Road, Shirley, NY 11967, USA

Tris-Bis PAGE



ELISA Data



 Tel: 1-631-559-9269 1-516-512-3133

 Email: info@creative-biomart.com  Fax: 1-631-938-8127

 45-1 Ramsey Road, Shirley, NY 11967, USA