

# Active GMP Recombinant Mouse Csf3 Protein, His-Tagged

**Cat. No.** Csf3-01M    **Lot. No.** (See product label)

## SPECIFICATION

<b>Product Overview</b>	GMP Recombinant Mouse Csf3 Protein, His-Tagged was expressed in Escherichia coli cell-derived in an animal component free process under cGMP guidelines.
<b>Species</b>	Mouse
<b>Source</b>	E.coli
<b>Description</b>	Enables granulocyte colony-stimulating factor receptor binding activity. Acts upstream of or within positive regulation of myeloid cell differentiation. Predicted to be located in endocytic vesicle lumen and extracellular region. Predicted to be active in extracellular space. Is expressed in several structures, including brain; dorsal aorta; liver; reproductive system; and yolk sac. Human ortholog(s) of this gene implicated in several diseases, including allergic cutaneous vasculitis; artery disease (multiple); ischemia (multiple); leukemia (multiple); and lung disease (multiple). Orthologous to human CSF3 (colony stimulating factor 3).
<b>Form</b>	Lyophilized
<b>Bio-activity</b>	Measure by its ability to induce proliferation in NFS-60 cells. The ED50 for this effect is <50 pg/mL. The specific activity of recombinant mouse G-CSF is > 2 x 10 <sup>7</sup> IU/mg.
<b>AA Sequence</b>	VPLVTVSALPPSLPLPRSFLKLSLEQVRKIQASGSVLLLEQLCATYKLCHPPEELVLLGH SLGIPKASLSGCSSQALQQTQCLSQLHSGLCCLYQGLLQALSGISPALAPTLDLLQLDV ANFATTIWQQMENLGVAPTQPTQSAMPAFTSAFQRRAGGVLAISYLQGFLETARL ALHHLA with polyhistidine tag at the N-terminus

 Tel: 1-631-559-9269    1-516-512-3133

 Email: [info@creative-biomart.com](mailto:info@creative-biomart.com)     Fax: 1-631-938-8127

 45-1 Ramsey Road, Shirley, NY 11967, USA

<b>Endotoxin</b>	<0.1 EU per 1 µg of the protein by the LAL method.
<b>Purity</b>	>98% as determined by SDS-PAGE analysis. Purified by Ni-NTA chromatography.
<b>Notes</b>	Please use within one month after protein reconstitution.
<b>Storage</b>	Lyophilized protein should be stored at -20°C. Upon reconstitution, protein aliquots should be stored at -20°C or -80°C.
<b>Storage Buffer</b>	The protein was lyophilized from a solution containing 1X PBS, pH 7.4.
<b>Reconstitution</b>	It is recommended to reconstitute the lyophilized protein in sterile H <sub>2</sub> O to a concentration not less than 100 µg/mL and incubate the stock solution for at least 20 min to ensure sufficient re-dissolved.

## GENE INFORMATION

<b>Gene Name</b>	Csf3 colony stimulating factor 3 (granulocyte) [ <i>Mus musculus</i> (house mouse) ]
<b>Official Symbol</b>	Csf3
<b>Synonyms</b>	Csfg; G-CSF; MGI-IG
<b>Gene ID</b>	12985
<b>mRNA Refseq</b>	NM_009971.1
<b>Protein Refseq</b>	NP_034101.1
<b>UniProt ID</b>	P09920

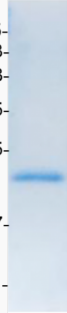
 Tel: 1-631-559-9269 1-516-512-3133

 Email: [info@creative-biomart.com](mailto:info@creative-biomart.com)  Fax: 1-631-938-8127

 45-1 Ramsey Road, Shirley, NY 11967, USA

kDa

75-  
63-  
48-  
35-  
25-  
17-  
11-



 Tel: 1-631-559-9269 1-516-512-3133

 Email: [info@creative-biomart.com](mailto:info@creative-biomart.com)  Fax: 1-631-938-8127

 45-1 Ramsey Road, Shirley, NY 11967, USA