

Recombinant Mouse Csf3 protein

Cat. No. Csf3-100M **Lot. No.** (See product label)

SPECIFICATION

Product Overview	Recombinant Mouse Csf3 protein was expressed in Escherichia coli.
Species	Mouse
Source	E.coli
ProteinLength	178
Description	The protein encoded by this gene is a cytokine that controls the production, differentiation, and function of granulocytes. The active protein is found extracellularly. Alternatively spliced transcript variants have been described for this gene.
Form	Lyophilized from a 0.2µm filtered concentrated solution in 10 mM Sodium Citrate, pH 4.0, 150 mM NaCl, 0.01 % Tween-20.
Bio-activity	Fully biologically active when compared to standard. The ED50 as determined by a cell proliferation assay using murine NFS-60 cells is less than 0.05 ng/ml, corresponding to a specific activity of > 2.0 × 10 ⁷ IU/mg.
Molecular Mass	Approximately 18.9 kDa, a single non-glycosylated polypeptide chain containing 178 amino acids.
AA Sequence	VPLVTVSALPPSLPLPRSFLKLSLEQVRKIQASGSVLLLEQLCATYKLCHPEELVLLGH SLGIPKASLSGCSSQALQQTQCLSQLHSGLCCLYQGLLQALSGISPALAPTLDLLQLDV

 Tel: 1-631-559-9269 1-516-512-3133

 Email: info@creative-biomart.com  Fax: 1-631-938-8127

 45-1 Ramsey Road, Shirley, NY 11967, USA

ANFATTIWQQMENLGVAPTQPTQSAMPAFTSAFQRRAGGVLAISYLQGFLETARL
ALHHLA

Endotoxin Less than 0.1 EU/μg of rMuG-CSF as determined by LAL method.

Purity >98% by SDS-PAGE and HPLC analysis.

Storage Use a manual defrost freezer and avoid repeated freeze-thaw cycles. 12 months from date of receipt, -20 to -70 centigrade as supplied. 1 month, 2 to 8 centigrade under sterile conditions after reconstitution. 3 months, -20 to -70 centigrade under sterile conditions after reconstitution.

Reconstitution We recommend that this vial be briefly centrifuged prior to opening to bring the contents to the bottom. Reconstitute in sterile distilled water or aqueous buffer containing 0.1 % BSA to a concentration of 0.1-1.0 mg/mL. Stock solutions should be apportioned into working aliquots and stored at ≤-20 centigrade. Further dilutions should be made in appropriate buffered solutions.

GENE INFORMATION

Gene Name [Csf3](#)

Official Symbol [Csf3](#)

Synonyms CSF3; colony stimulating factor 3 (granulocyte); granulocyte colony-stimulating factor; Csf3; G-CSF; MGI-IG;

Gene ID [12985](#)

mRNA Refseq [NM_009971](#)

 Tel: 1-631-559-9269 1-516-512-3133

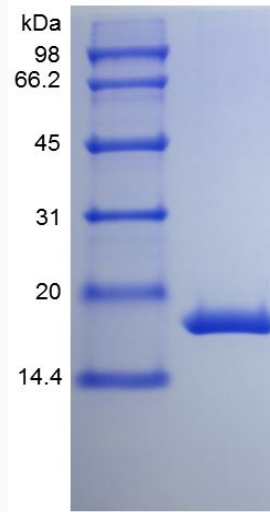
 Email: info@creative-biomart.com  Fax: 1-631-938-8127

 45-1 Ramsey Road, Shirley, NY 11967, USA

Protein Refseq NP_034101

UniProt ID P09920

SDS-PAGE of Csf3-
100M



 Tel: 1-631-559-9269 1-516-512-3133

 Email: info@creative-biomart.com  Fax: 1-631-938-8127

 45-1 Ramsey Road, Shirley, NY 11967, USA