

Active Recombinant Mouse Csf3 Protein (Glu55-Ala208), N-His tagged, Animal-free, Carrier-free

Cat. No. Csf3-20M Lot. No. (See product label)

SPECIFICATION

Product Overview	Recombinant Mouse Csf3 Protein (Glu55-Ala208) with N-His tag was expressed in E. coli and Animal-free as well as Carrier-free.
Species	Mouse
Source	E.coli
ProteinLength	Glu55-Ala208
Description	Granulocyte Colony-Stimulating Factor (G-CSF) is a 18.67 kDa protein containing 207 amino acid which secreted by monocytes, macrophages, fibroblasts, and endothelial cells, regulates cell growth, maturation, and development of myeloid cells. G-CSF is a member of the CSF family of glycoproteins, and makes the bone marrow produce more white blood cells so it can reduce the risk of infection after some types of cancer treatment. G-CSF is also an established useful clinical agent for increasing neutrophilic granulocytes levels. Mouse G-CSF shares 73% sequence homology with human G-CSF.
Form	Lyophilized
Bio-activity	Measure by its ability to induce proliferation in NFS-60 cells. The ED50 for this effect is < 50 pg/mL. The specific activity of recombinant mouse G-CSF is > 2 × 10 ⁷ IU/mg.
Molecular Mass	The protein has a calculated MW of 19.76 kDa.

 Tel: 1-631-559-9269 1-516-512-3133

 Email: info@creative-biomart.com  Fax: 1-631-938-8127

 45-1 Ramsey Road, Shirley, NY 11967, USA

	The protein migrates as 17-25 kDa under reducing condition (SDS-PAGE analysis).
Endotoxin	< 0.1 EU/μg of the protein by the LAL method.
Purity	>98% as determined by SDS-PAGE analysis.
Storage	This product is stable after storage at: -20 centigrade for 12 months in lyophilized state from date of receipt. -20 or -80 centigrade for 1 month under sterile conditions after reconstitution. Avoid repeated freeze/thaw cycles.
Storage Buffer	Lyophilized from a 0.2 μm filtered solution of PBS, pH 7.4.
Reconstitution	It is recommended to reconstitute the lyophilized protein in sterile H2O to a concentration not less than 200 μg/mL and incubate the stock solution for at least 20 min to ensure sufficient re-dissolved.
Shipping	The product is shipped with polar packs. Upon receipt, store it immediately at -20 centigrade or lower for long term storage.

GENE INFORMATION

Gene Name	Csf3 colony stimulating factor 3 (granulocyte) [Mus musculus (house mouse)]
Official Symbol	Csf3
Synonyms	CSF3; colony stimulating factor 3 (granulocyte); granulocyte colony-stimulating factor; Csf3; G-CSF; MGI-IG;
Gene ID	12985

 Tel: 1-631-559-9269 1-516-512-3133

 Email: info@creative-biomart.com  Fax: 1-631-938-8127

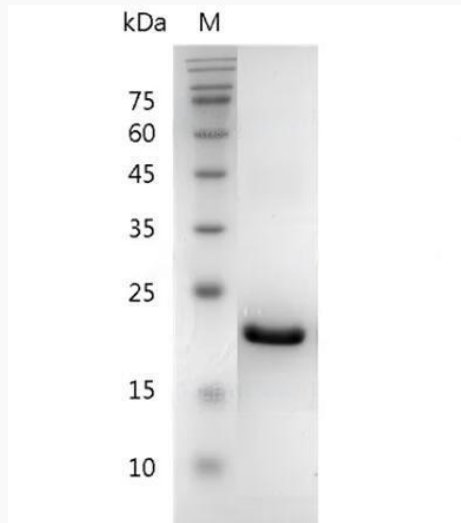
 45-1 Ramsey Road, Shirley, NY 11967, USA

mRNA Refseq [NM_009971](#)

Protein Refseq [NP_034101](#)

UniProt ID [P09920](#)

**SDS-PAGE analysis
of recombinant
mouse G-CSF.**



 Tel: 1-631-559-9269 1-516-512-3133

 Email: info@creative-biomart.com  Fax: 1-631-938-8127

 45-1 Ramsey Road, Shirley, NY 11967, USA