

## Active Recombinant Rat Csf3 protein

**Cat. No.** Csf3-9291R    **Lot. No.** (See product label)

### SPECIFICATION

<b>Product Overview</b>	Active Recombinant Rat Csf3 protein(P97712)(22-214 aa) was expressed in E.coli.
<b>Species</b>	Rat
<b>Source</b>	E.coli
<b>ProteinLength</b>	22-214 aa
<b>Form</b>	Lyophilized from a 0.2 µm filtered concentrated solution in 5 mM Sodium Citrate, pH 4.0.
<b>Bio-activity</b>	Fully biologically active when compared to standard. The ED50 determined by a cell proliferation assay using murine NFS-60 cells is less than 0.05 ng/ml, corresponding to a specific activity of > 2.0 × 10 <sup>7</sup> IU/mg.
<b>Molecular Mass</b>	Approximately 21.5 kDa, a single non-glycosylated polypeptide chain containing 195 amino acids.
<b>AASequence</b>	KKIPLLVSS LPPSLPLPRS FLLKSLEQVR KIQARNTLL EQLCATYKLC HPEELVLFHG SLGIPKASLS SCSSQALQQT KCLSQLHSG LFLYQGLLQAL AGISSELAPT LDMLHLDVDN FATTIWQQME SLGVAPTVPQ TQSTMPIFTS AFQRRAGGVL VTSYLQSFLE TAHHALHHLP RPAQKHPES LFISI
<b>Endotoxin</b>	Less than 0.1 EU/µg of rRtG-CSF as determined by LAL method.

 Tel: 1-631-559-9269    1-516-512-3133

 Email: [info@creative-biomart.com](mailto:info@creative-biomart.com)     Fax: 1-631-938-8127

 45-1 Ramsey Road, Shirley, NY 11967, USA

<b>Purity</b>	>97% by SDS-PAGE and HPLC analyses.
<b>Storage</b>	Use a manual defrost freezer and avoid repeated freeze-thaw cycles. - 12 months from date of receipt, -20 to -70 °C as supplied. - 1 month, 2 to 8 °C under sterile conditions after reconstitution. - 3 months, -20 to -70 °C under sterile conditions after reconstitution.
<b>Reconstitution</b>	We recommend that this vial be briefly centrifuged prior to opening to bring the contents to the bottom. Reconstitute in sterile distilled water or aqueous buffer containing 0.1 % BSA to a concentration of 0.1-1.0 mg/mL. Stock solutions should be apportioned into working aliquots and stored at ≤ -20 °C. Further dilutions should be made in appropriate buffered solutions.

## GENE INFORMATION

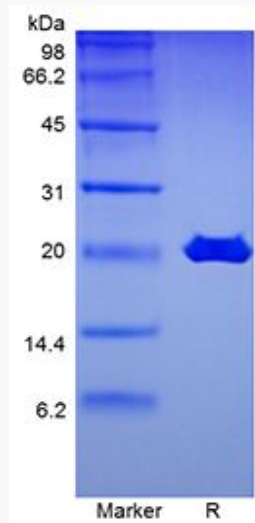
<b>Gene Name</b>	Csf3 colony stimulating factor 3 (granulocyte) [ <i>Rattus norvegicus</i> ]
<b>Official Symbol</b>	Csf3
<b>Synonyms</b>	CSF3; colony stimulating factor 3 (granulocyte); granulocyte colony-stimulating factor;
<b>Gene ID</b>	25610
<b>mRNA Refseq</b>	NM_017104
<b>Protein Refseq</b>	NP_058800

 Tel: 1-631-559-9269 1-516-512-3133

 Email: [info@creative-biomart.com](mailto:info@creative-biomart.com)  Fax: 1-631-938-8127

 45-1 Ramsey Road, Shirley, NY 11967, USA

**SDS-PAGE**



 Tel: 1-631-559-9269 1-516-512-3133

 Email: [info@creative-biomart.com](mailto:info@creative-biomart.com)  Fax: 1-631-938-8127

 45-1 Ramsey Road, Shirley, NY 11967, USA