

Recombinant Mouse Csn1s1 Protein, His-tagged

Cat. No. Csn1s1-856M **Lot. No.** (See product label)

SPECIFICATION

Product Overview	Recombinant Mouse Csn1s1 Protein (Met16-Trp313) with His tag was expressed in E. coli.
Species	Mouse
Source	E.coli
ProteinLength	Met16-Trp313
Description	Predicted to be involved in response to dehydroepiandrosterone; response to estradiol; and response to steroid hormone. Located in extracellular region. Is expressed in embryo and mammary gland. Orthologous to human CSN1S1 (casein alpha s1).
Form	Freeze-dried powder
Molecular Mass	Predicted Molecular Mass: 47.7 kDa; Accurate Molecular Mass: 50 kDa
Purity	> 90%
Applications	Positive Control; Immunogen; SDS-PAGE; WB.
Stability	The thermal stability is described by the loss rate. The loss rate was determined by accelerated thermal degradation test, that is, incubate the protein at 37 centigrade for 48h, and no obvious degradation and precipitation were observed. The loss rate is

 Tel: 1-631-559-9269 1-516-512-3133

 Email: info@creative-biomart.com  Fax: 1-631-938-8127

 45-1 Ramsey Road, Shirley, NY 11967, USA

less than 5% within the expiration date under appropriate storage condition.

Storage

Avoid repeated freeze/thaw cycles. Store at 2-8 centigrade for one month. Aliquot and store at -80 centigrade for 12 months.

Storage Buffer

PBS, pH7.4, containing 0.01% SKL, 1mM DTT, 5% Trehalose and Proclin300.

Reconstitution

Reconstitute in ddH₂O to a concentration of 0.1-1.0 mg/mL. Do not vortex.

GENE INFORMATION

Gene Name

Csn1s1 casein alpha s1 [*Mus musculus* (house mouse)]

Official Symbol

Csn1s1

Synonyms

CSN1S1; casein alpha s1; alpha-S1-casein; alpha-casein; Csna; AA959832; AW212882;

Gene ID

12990

mRNA Refseq


NM_007784

Protein Refseq

NP_031810

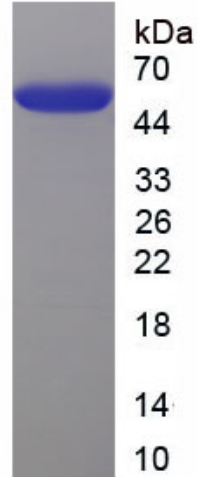
UniProt ID

P19228

 Tel: 1-631-559-9269 1-516-512-3133

 Email: info@creative-biomart.com  Fax: 1-631-938-8127

 45-1 Ramsey Road, Shirley, NY 11967, USA



Tel: 1-631-559-9269 1-516-512-3133

Email: info@creative-biomart.com Fax: 1-631-938-8127

45-1 Ramsey Road, Shirley, NY 11967, USA