

## Recombinant Rat Csn1s1 Protein, His-tagged

**Cat. No.** Csn1s1-857R    **Lot. No.** (See product label)

### SPECIFICATION

<b>Product Overview</b>	Recombinant Rat Csn1s1 Protein (Leu16-Trp284) with His tag was expressed in E. coli.
<b>Species</b>	Rat
<b>Source</b>	E.coli
<b>ProteinLength</b>	Leu16-Trp284
<b>Description</b>	Predicted to be involved in response to dehydroepiandrosterone; response to estradiol; and response to steroid hormone. Predicted to be located in extracellular region. Predicted to be active in extracellular space. Orthologous to human CSN1S1 (casein alpha s1).
<b>Form</b>	Freeze-dried powder
<b>Molecular Mass</b>	Predicted Molecular Mass: 34 kDa; Accurate Molecular Mass: 42 kDa
<b>Purity</b>	> 95%
<b>Applications</b>	Positive Control; Immunogen; SDS-PAGE; WB.
<b>Stability</b>	The thermal stability is described by the loss rate. The loss rate was determined by accelerated thermal degradation test, that is, incubate the protein at 37 centigrade for 48h, and no obvious degradation and precipitation were observed. The loss rate is

 Tel: 1-631-559-9269    1-516-512-3133

 Email: [info@creative-biomart.com](mailto:info@creative-biomart.com)     Fax: 1-631-938-8127

 45-1 Ramsey Road, Shirley, NY 11967, USA

less than 5% within the expiration date under appropriate storage condition.

**Storage**

Avoid repeated freeze/thaw cycles. Store at 2-8 centigrade for one month. Aliquot and store at -80 centigrade for 12 months.

**Storage Buffer**

20mM Tris, 150mM NaCl, pH8.0, containing 1mM EDTA, 1mM DTT, 0.01% SKL, 5% Trehalose and Proclin300.

**Reconstitution**

Reconstitute in 20mM Tris, 150mM NaCl (pH8.0) to a concentration of 0.1-1.0 mg/mL. Do not vortex.

## GENE INFORMATION

**Gene Name**

[Csn1s1 casein alpha s1 \[ Rattus norvegicus \(Norway rat\) \]](#)

**Official Symbol**

[Csn1s1](#)

**Synonyms**

CSN1S1; casein alpha s1; alpha-S1-casein; alpha-casein; Casein, alpha; Casa; Csn1; Csna;

**Gene ID**

[24284](#)

**mRNA Refseq**

[NM\\_138874](#)

**Protein Refseq**

[NP\\_620229](#)

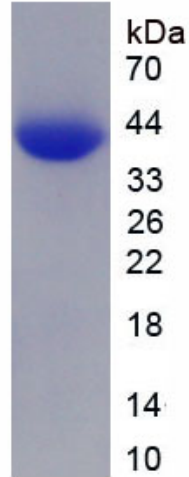
**UniProt ID**

[P02661](#)

 Tel: 1-631-559-9269 1-516-512-3133

 Email: [info@creative-biomart.com](mailto:info@creative-biomart.com)  Fax: 1-631-938-8127

 45-1 Ramsey Road, Shirley, NY 11967, USA



 Tel: 1-631-559-9269 1-516-512-3133

 Email: [info@creative-biomart.com](mailto:info@creative-biomart.com)  Fax: 1-631-938-8127

 45-1 Ramsey Road, Shirley, NY 11967, USA