

Recombinant *B. burgdorferi* CspA Protein, MBP-tagged

Cat. No. CspA-01B Lot. No. (See product label)

SPECIFICATION

Product Overview	Recombinant <i>Borrelia burgdorferi</i> CRASP-1 protein produced in <i>E. coli</i> . Protein contains a MBP-tag and is visible on SDS-PAGE at 69.3 kDa for CRASP-1-MBP (26.9 kDa for CRASP-1 and 42.4 kDa for MBP)
Species	<i>Borrelia burgdorferi</i> B31
Source	<i>E. coli</i>
Description	Complement Regulator-Acquiring Surface Protein 1 (CRASP-1, CspA) is a 25.9 kDa multifunctional protein, encoded by the spirochete <i>B. burgdorferi</i> , which is carried by Ixodes ticks. Strain B31 is the type strain (ATCC 35210) for this organism and was derived by limited dilutional cloning from the original Lyme-disease tick isolate obtained by A. Barbour. Native CRASP-1 represents a homodimer with a previously unknown complex protein fold. CRASP-1 and four additional immune evasion proteins bind combinations of human plasma regulators, including collagen I, collagen III, collagen IV, fibronectin, laminin, factor H-like protein 1 (FHL-1) (resulting in inhibition of complement activation in mammals) and Human Bone Morphogenic Protein 2. These interactions may contribute to adhesion, bacterial colonization, and organ tropism to promote dissemination of <i>B. burgdorferi</i> in the host.
Form	Liquid, 0.2 µm filter sterilised.
Molecular Mass	69.3 kDa for CRASP-1-MBP (26.9 kDa for CRASP-1 and 42.4 kDa for MBP)
Purity	> 90%

 Tel: 1-631-559-9269 1-516-512-3133

 Email: info@creative-biomart.com  Fax: 1-631-938-8127

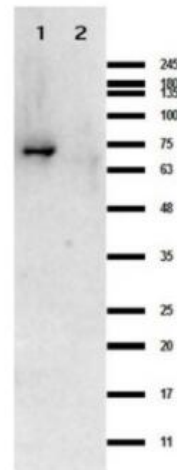
 45-1 Ramsey Road, Shirley, NY 11967, USA

Storage Short term: +2 to +8 centigrade
Long Term: -80 centigrade
Can be frozen, but avoid multiple freeze/thaw cycles

Concentration 1.0 mg/mL by UV absorbance at 280 nm

Storage Buffer 0.02 M Potassium Phosphate, 0.15 M Sodium Chloride, pH 7.2 and 0.01% (w/v) Sodium Azide.

**Western blot results
of Rabbit Anti-
CRASP-1 Antibody.**



Lane 1: CRASP-1 protein.

Lane 2: MBP.

Load: 0.05 μ L.

Primary Antibody: Rabbit Anti-CRASP-1 Antibody at 1.0 mg/mL overnight at 4 centigrade.

Secondary Antibody: Goat anti-Rabbit at 1:70,000 for 30 min at RT.

HiGlo Blocking Buffer for 30min at room temperature.

Expect: ~63.9 kDa.

 Tel: 1-631-559-9269 1-516-512-3133

 Email: info@creative-biomart.com  Fax: 1-631-938-8127

 45-1 Ramsey Road, Shirley, NY 11967, USA