

Recombinant Rat Cspg5 protein, His-tagged

Cat. No. Cspg5-1539R Lot. No. (See product label)

SPECIFICATION

Product Overview	Recombinant Rat Cspg5 aa. (Ala139~Arg370) fused with N-terminal His tag was produced in E. coli cells.
Species	Rat
Source	E.coli
ProteinLength	Ala139~Arg370
Form	Freeze-dried powder
Molecular Mass	41kDa as determined by SDS-PAGE reducing conditions.
Endotoxin	<1.0EU per 1g (determined by the LAL method).
Purity	>98%
Characteristic	The isoelectric point is 4.3.
Applications	SDS-PAGE; WB; ELISA; IP; CoIP; Purification; Amine Reactive Labeling.
Stability	The thermal stability is described by the loss rate. The loss rate was determined by accelerated thermal degradation test, that is, incubate the protein at 37°C for 48h, and no obvious degradation and precipitation were observed. The loss rate is less

 Tel: 1-631-559-9269 1-516-512-3133

 Email: info@creative-biomart.com  Fax: 1-631-938-8127

 45-1 Ramsey Road, Shirley, NY 11967, USA

than 5% within the expiration date under appropriate storage condition.

Storage

Avoid repeated freeze/thaw cycles. Store at 2-8°C for one month. Aliquot and store at -80°C for 12 months.

Concentration

200g/mL

Storage buffer

20mM Tris, 150mM NaCl, pH8.0, containing 1mM EDTA, 1mM DTT, 0.01% sarcosyl, 5%Trehalose and Proclin300.

Reconstitution

Reconstitute in 20mM Tris, 150mM NaCl (pH8.0) to a concentration of 0.1-1.0mg/mL. Do not vortex.

GENE INFORMATION

Gene Name

[Cspg5 chondroitin sulfate proteoglycan 5 \[Rattus norvegicus \(Norway rat\) \]](#)

Official Symbol

[Cspg5](#)

Synonyms

Ngc; Caleb; acidic leucine-rich EGF-like domain-containing brain protein; neuroglycan C; chondroitin sulfate proteoglycan 5

Gene ID

[50568](#)

mRNA Refseq

[NM_019284.1](#)

Protein Refseq

[NP_062157.1](#)

UniProt ID

[Q9ERQ6](#)

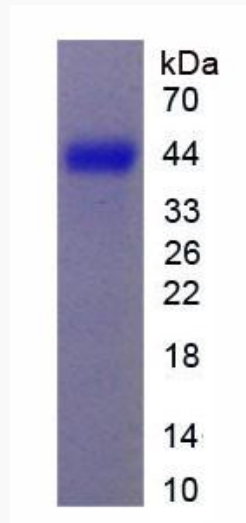
 Tel: 1-631-559-9269 1-516-512-3133

 Email: info@creative-biomart.com  Fax: 1-631-938-8127

 45-1 Ramsey Road, Shirley, NY 11967, USA



SDS-PAGE



Tel: 1-631-559-9269 1-516-512-3133

Email: info@creative-biomart.com Fax: 1-631-938-8127

45-1 Ramsey Road, Shirley, NY 11967, USA