

Active Recombinant Rat CTGF protein, His-GST-tagged

Cat. No. Ctgf-544R Lot. No. (See product label)

SPECIFICATION

| | |
|-------------------------|--|
| Product Overview | Active Recombinant Rat CTGF protein(Q9R1E9)(25~347 aa), fused with N-terminal His tag and GST tag, was expressed in E.coli. |
| Species | Rat |
| Source | E.coli |
| ProteinLength | 25-347 aa |
| Form | Lyophilized from sterile PBS, pH7.4, containing 0.01% SKL, 1mM DTT, 5% Trehalose and Proclin300. |
| Bio-activity | <p>Connective Tissue Growth Factor (CTGF), also known as CCN2 is a matricellular protein of the CCN family of extracellular matrix-associated heparin-binding proteins. CTGF has important roles in many biological processes, including cell adhesion, migration, proliferation, angiogenesis, skeletal development, and tissue wound repair, and is critically involved in fibrotic disease and several forms of cancers. As CTGF has the function of cell adhesion, we measure the activity of recombinant rat CTGF by the ability of the immobilized protein to support the adhesion of Balb/3T3 mouse embryonic fibroblast cell. When 5×10^4 cells/well are added to different concentrations of recombinant rat CTGF coated plates, cells will adhere after 2 hour incubation at 37°C. The adhesion of Balb/3T3 after 2 hour incubation at 37°C observed by inverted microscope was shown. Cell adherent was in a dose dependent manner, the result was shown, the EC50 was 1 ug/ml.</p> |

 Tel: 1-631-559-9269 1-516-512-3133

 Email: info@creative-biomart.com  Fax: 1-631-938-8127

 45-1 Ramsey Road, Shirley, NY 11967, USA

| | |
|-----------------------|--|
| Molecular Mass | 65.4kDa |
| Endotoxin | <1.0EU per 1µg (determined by the LAL method). |
| Purity | > 90% as determined by SDS-PAGE. |
| Storage | Avoid repeated freeze/thaw cycles. Store at -20°C for 12 months. Aliquot and store at -80°C for 12 months. |
| Reconstitution | Reconstitute in 10mM PBS (pH7.4) to a concentration of 0.1-1.0 mg/mL. Do not vortex. |

GENE INFORMATION

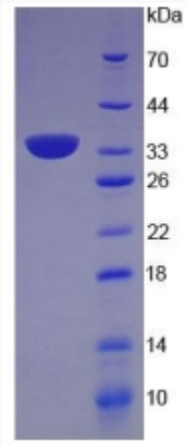
| | |
|------------------------|--|
| Gene Name | Ctgf <i>connective tissue growth factor</i> [<i>Rattus norvegicus</i>] |
| Official Symbol | CTGF |
| Synonyms | CTGF; connective tissue growth factor; CCN family member 2; connective tissue growth-related protein; CTGRP; |
| Gene ID | 64032 |
| mRNA Refseq | NM_022266 |
| Protein Refseq | NP_071602 |

 Tel: 1-631-559-9269 1-516-512-3133

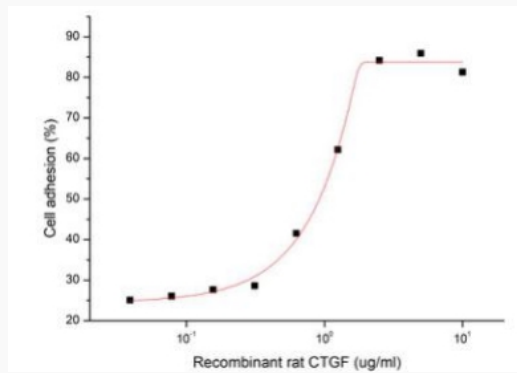
 Email: info@creative-biomart.com  Fax: 1-631-938-8127

 45-1 Ramsey Road, Shirley, NY 11967, USA

SDS-PAGE



Activity



 Tel: 1-631-559-9269 1-516-512-3133

 Email: info@creative-biomart.com  Fax: 1-631-938-8127

 45-1 Ramsey Road, Shirley, NY 11967, USA