

Recombinant Rat Cth protein, His & GST-tagged

Cat. No. Cth-7094R **Lot. No.** (See product label)

SPECIFICATION

Product Overview	Recombinant Rat Cth aa. (Val36~His299 (Accession# P18757)) fused with N-terminal His & GST tag was produced in E. coli cells.
Species	Rat
Source	E.coli
ProteinLength	Val36~His299
Description	Putative cystathionine gamma-lyase enzyme.
Form	Freeze-dried powder
Molecular Mass	Predicted Molecular Mass: 59.1kDa
Endotoxin	<1.0EU per 1ug (determined by the LAL method)
Purity	>90%
Characteristic	The isoelectric point is 8.9.
Applications	SDS-PAGE; WB; ELISA; IP.
Stability	The thermal stability is described by the loss rate of the target protein. The loss rate was determined by accelerated thermal degradation test, that is, incubate the protein

 Tel: 1-631-559-9269 1-516-512-3133

 Email: info@creative-biomart.com  Fax: 1-631-938-8127

 45-1 Ramsey Road, Shirley, NY 11967, USA

at 37°C for 48h, and no obvious degradation and precipitation were observed. (Referring from China Biological Products Standard, which was calculated by the Arrhenius equation.) The loss of this protein is less than 5% within the expiration date under appropriate storage condition.

Storage	Avoid repeated freeze/thaw cycles. Store at 2-8°C for one month. Aliquot and store at -80°C for 12 months.
Storage buffer	Supplied as lyophilized form in PBS, pH7.4, containing 5% sucrose, 0.01% sarcosyl.
Reconstitution	Reconstitute in sterile PBS, pH7.2-pH7.4.

GENE INFORMATION

Gene Name	Cth cystathionine gamma-lyase [<i>Rattus norvegicus</i> (Norway rat)]
Official Symbol	Cth
Synonyms	Cth; cystathionine gamma-lyase; H; cystathionine gamma-lyase; CTL target antigen; PRB-RA; cystathionase (cystathionine gamma-lyase); cysteine-protein sulfhydrase; gamma-cystathionase; probasin-related antigen
Gene ID	24962
mRNA Refseq	NM_017074.1
Protein Refseq	NP_058770.1
UniProt ID	P18757

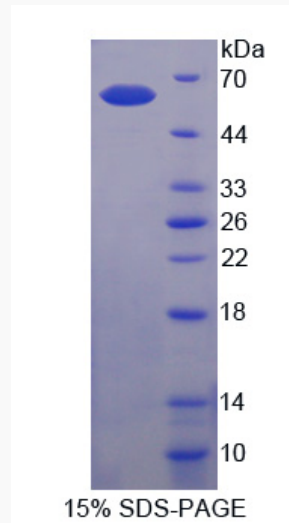
 Tel: 1-631-559-9269 1-516-512-3133

 Email: info@creative-biomart.com  Fax: 1-631-938-8127

 45-1 Ramsey Road, Shirley, NY 11967, USA



SDS-PAGE



Tel: 1-631-559-9269 1-516-512-3133

Email: info@creative-biomart.com Fax: 1-631-938-8127

45-1 Ramsey Road, Shirley, NY 11967, USA