

Recombinant Mouse Cthrc1 protein, His-tagged

Cat. No. Cthrc1-3522M **Lot. No.** (See product label)

SPECIFICATION

Product Overview	Recombinant Mouse Cthrc1 protein(Q9D1D6)(33-245aa), fused with C-terminal His tag, was expressed in HEK293.
Species	Mouse
Source	HEK293
ProteinLength	33-245aa
Tag	C-His
Form	If the delivery form is liquid, the default storage buffer is Tris/PBS-based buffer, 5%-50% glycerol. If the delivery form is lyophilized powder, the buffer before lyophilization is Tris/PBS-based buffer, 6% Trehalose, pH 8.0.
Molecular Mass	25.9 kDa
Purity	Greater than 90% as determined by SDS-PAGE. Greater than 90% as determined by SEC-HPLC.
Storage	Store at -20°C/-80°C upon receipt, aliquoting is necessary for mutiple use. Avoid repeated freeze-thaw cycles.
Reconstitution	We recommend that this vial be briefly centrifuged prior to opening to bring the contents to the bottom. Please reconstitute protein in deionized sterile water to a

 Tel: 1-631-559-9269 1-516-512-3133

 Email: info@creative-biomart.com  Fax: 1-631-938-8127

 45-1 Ramsey Road, Shirley, NY 11967, USA

concentration of 0.1-1.0 mg/mL. We recommend to add 5-50% of glycerol (final concentration) and aliquot for long-term storage at -20°C/-80°C.

AA Sequence

SENPVKVQKALIRQREVVDLYNGMCLQGVPGRDGPANGIPGTPGIPGRDG
 FKGEKGECLRESFEESWTPNYKQCSWSSLNYGIDLGKIAECTFTKMRSNSALRVLF
 SGSLRLKCRNACCQRWYFTFNGAECGSPLEAIIYLDQGSPELNSTINIHRSSVEG
 LCEGIGAGLVDVAIWVGTCSDYKGDASTGWNSVSRIIIIEELPK

GENE INFORMATION

Gene Name

[Cthrc1 collagen triple helix repeat containing 1 \[Mus musculus \]](#)

Official Symbol

[Cthrc1](#)

Synonyms

CTHRC1; collagen triple helix repeat containing 1; collagen triple helix repeat-containing protein 1; 1110014B07Rik;

Gene ID

[68588](#)

mRNA Refseq

[NM_026778](#)

Protein Refseq

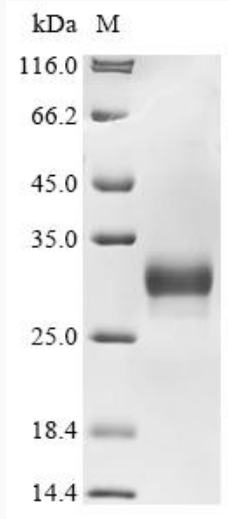
[NP_081054](#)

 Tel: 1-631-559-9269 1-516-512-3133

 Email: info@creative-biomart.com  Fax: 1-631-938-8127

 45-1 Ramsey Road, Shirley, NY 11967, USA

SDS-PAGE



 Tel: 1-631-559-9269 1-516-512-3133

 Email: info@creative-biomart.com  Fax: 1-631-938-8127

 45-1 Ramsey Road, Shirley, NY 11967, USA