

## Active Recombinant Mouse Ctla4 Protein, hlgG/His-tagged

Cat. No. Ctla4-06M Lot. No. (See product label)

### SPECIFICATION

<b>Product Overview</b>	Recombinant mouse Ctla-4 (38-161aa), fused to hlgG-His-tag at C terminus, was expressed in insect cell and purified by using conventional chromatography techniques.
<b>Species</b>	Mouse
<b>Source</b>	Insect Cells
<b>ProteinLength</b>	38-161 a.a.
<b>Description</b>	This gene is a member of the immunoglobulin superfamily, and encodes a protein that functions as a negative regulator of T-cell responses. Alternatively spliced transcript variants encoding different isoforms have been described for this gene.
<b>Form</b>	Liquid
<b>Bio-activity</b>	The activity is determined by the IL-2 ELISA in a using stimulated Jurkat human acute T cell leukemia cells with Human B7-1/CD80. The ED50 range $\leq$ 150 ng/mL.
<b>Molecular Mass</b>	40.6 kDa (363aa)
<b>AA Sequence</b>	IQVTQPSVVLASSHGVASFPCEYSPSHNTDEV RVTVLRQTNDQMTEVCATTFTEKN TVGFLDYPFCSGTFNESRVNLTIQGLRAVD TGLYLCKVELMYP PPYFVGMGNGTQIY VIDPEPCPDSD

 Tel: 1-631-559-9269 1-516-512-3133

 Email: [info@creative-biomart.com](mailto:info@creative-biomart.com)  Fax: 1-631-938-8127

 45-1 Ramsey Road, Shirley, NY 11967, USA

<b>Endotoxin</b>	< 1 EU/μg of protein (determined by LAL method)
<b>Purity</b>	> 90% by SDS-PAGE
<b>Applications</b>	SDS-PAGE, Bioactivity
<b>Storage</b>	Can be stored at +2 to +8 centigrade for 1 week. For long term storage, aliquot and store at -20 to -80 centigrade. Avoid repeated freezing and thawing cycles.
<b>Concentration</b>	0.5 mg/mL (determined by Absorbance at 280nm)
<b>Storage Buffer</b>	Phosphate-Buffered Saline (pH 7.4) containing 10% glycerol

## GENE INFORMATION

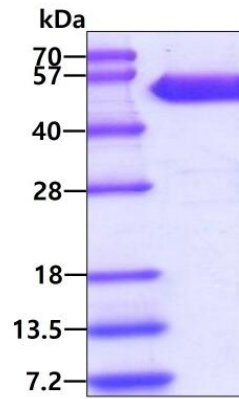
<b>Gene Name</b>	Ctla4 cytotoxic T-lymphocyte-associated protein 4 [ <i>Mus musculus</i> (house mouse) ]
<b>Official Symbol</b>	Ctla4
<b>Synonyms</b>	Ctla4; cytotoxic T-lymphocyte-associated protein 4; Cd152; Ly-56; Ctla-4; cytotoxic T-lymphocyte protein 4; CD152 antigen; cytotoxic T-lymphocyte-associated antigen 4
<b>Gene ID</b>	12477
<b>mRNA Refseq</b>	NM_009843
<b>Protein Refseq</b>	NP_033973
<b>UniProt ID</b>	P09793

 Tel: 1-631-559-9269 1-516-512-3133

 Email: [info@creative-biomart.com](mailto:info@creative-biomart.com)  Fax: 1-631-938-8127

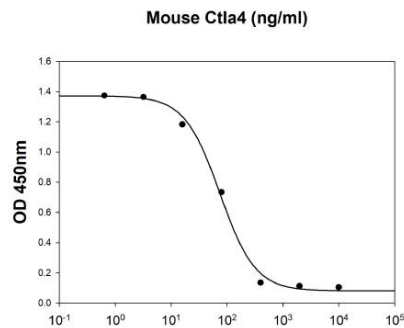
 45-1 Ramsey Road, Shirley, NY 11967, USA

**SDS-PAGE**



3  $\mu$ g by SDS-PAGE under reducing condition and visualized by coomassie blue stain

**Biological Activity**



Mouse Ctla4 inhibits IL-2 secretion of the stimulated Jurkat human acute T cell leukemia cells with Human B7-1/CD80. The ED50 range  $\leq$ 150 ng/ml.

 Tel: 1-631-559-9269 1-516-512-3133

 Email: [info@creative-biomart.com](mailto:info@creative-biomart.com)  Fax: 1-631-938-8127

 45-1 Ramsey Road, Shirley, NY 11967, USA