

# Recombinant Guinea pig CtlA4 Protein (Ala37-Asp161), C-His tagged

Cat. No. CtlA4-3845G    Lot. No. (See product label)

## SPECIFICATION

<b>Product Overview</b>	Recombinant guinea pig CtlA4 (Ala37-Asp161) fused with the C-terminal His tag was expressed in yeast.
<b>Species</b>	Guinea pig
<b>Source</b>	Yeast
<b>ProteinLength</b>	Ala37-Asp161
<b>Form</b>	Lyophilized powder/frozen liquid
<b>Molecular Mass</b>	13.64 kDa
<b>Purity</b>	>90% as determined by SDS-PAGE.
<b>Notes</b>	For research use only.
<b>Storage</b>	Use a manual defrost freezer and avoid repeated freeze thaw cycles. Store at 2 to 8 centigrade for one week. Store at -20 to -80 centigrade for twelve months from the date of receipt.
<b>Storage Buffer</b>	Supplied as solution form in PBS or lyophilized from PBS.
<b>Reconstitution</b>	Reconstitute in sterile water for a stock solution.

 Tel: 1-631-559-9269    1-516-512-3133

 Email: [info@creative-biomart.com](mailto:info@creative-biomart.com)     Fax: 1-631-938-8127

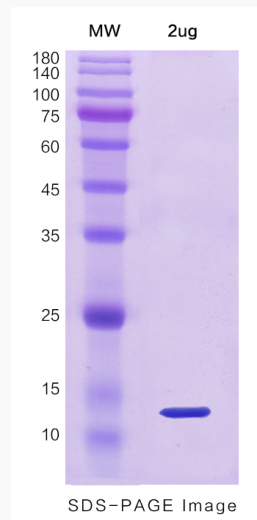
 45-1 Ramsey Road, Shirley, NY 11967, USA


**Shipping**

They are shipped out with dry ice/blue ice unless customers require otherwise.

**GENE INFORMATION**

<b>Gene Name</b>	Ctla4 cytotoxic T-lymphocyte associated protein 4 [ <i>Cavia porcellus</i> (domestic guinea pig) ]
<b>Official Symbol</b>	Ctla4
<b>Synonyms</b>	Ctla4; cytotoxic T-lymphocyte associated protein 4; cytotoxic T-lymphocyte protein 4
<b>Gene ID</b>	100725760
<b>mRNA Refseq</b>	XM_003474180
<b>Protein Refseq</b>	XP_003474228
<b>UniProt ID</b>	H0VUB1

**SDS-PAGE**


 Tel: 1-631-559-9269 1-516-512-3133

 Email: [info@creative-biomart.com](mailto:info@creative-biomart.com)  Fax: 1-631-938-8127

 45-1 Ramsey Road, Shirley, NY 11967, USA