

Recombinant Rat Ctrc Protein, His-tagged

Cat. No. Ctrc-874R Lot. No. (See product label)

SPECIFICATION

Product Overview	Recombinant Rat Ctrc Protein (Val30-leu268) with His tag was expressed in E. coli.
Species	Rat
Source	E.coli
ProteinLength	Val30-leu268
Description	Predicted to enable serine-type endopeptidase activity. Predicted to be involved in proteolysis. Predicted to act upstream of or within cellular calcium ion homeostasis. Orthologous to human CTRC (chymotrypsin C).
Form	Freeze-dried powder
Molecular Mass	Predicted Molecular Mass: 30.2 kDa; Accurate Molecular Mass: 30 kDa
Purity	> 95%
Applications	Cell culture; Activity Assays.
Stability	The thermal stability is described by the loss rate. The loss rate was determined by accelerated thermal degradation test, that is, incubate the protein at 37 centigrade for 48h, and no obvious degradation and precipitation were observed. The loss rate is less than 5% within the expiration date under appropriate storage condition.

 Tel: 1-631-559-9269 1-516-512-3133

 Email: info@creative-biomart.com  Fax: 1-631-938-8127

 45-1 Ramsey Road, Shirley, NY 11967, USA

Storage	Avoid repeated freeze/thaw cycles. Store at 2-8 centigrade for one month. Aliquot and store at -80 centigrade for 12 months.
Storage Buffer	20mM Tris, 150mM NaCl, pH8.0, containing 1mM EDTA, 1mM DTT, 0.01% SKL, 5% Trehalose and Proclin300.
Reconstitution	Reconstitute in 20mM Tris, 150mM NaCl (pH8.0) to a concentration of 0.1-1.0 mg/mL. Do not vortex.

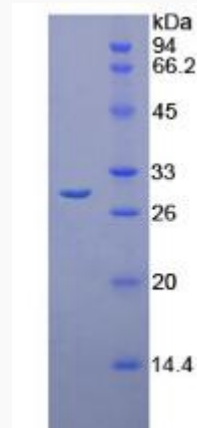
GENE INFORMATION

Gene Name	Ctrc chymotrypsin C (caldecrin) [Rattus norvegicus]
Official Symbol	Ctrc
Synonyms	CTRC; chymotrypsin C (caldecrin); chymotrypsin-C; caldecrin; preprocaldecrin; serum calcium-decreasing factor;
Gene ID	362653
mRNA Refseq	NM_001077649
Protein Refseq	NP_001071117
UniProt ID	P55091

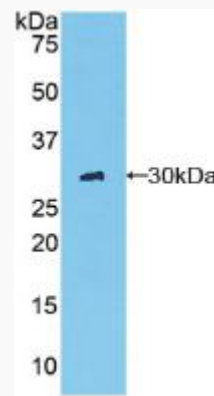
 Tel: 1-631-559-9269 1-516-512-3133

 Email: info@creative-biomart.com  Fax: 1-631-938-8127

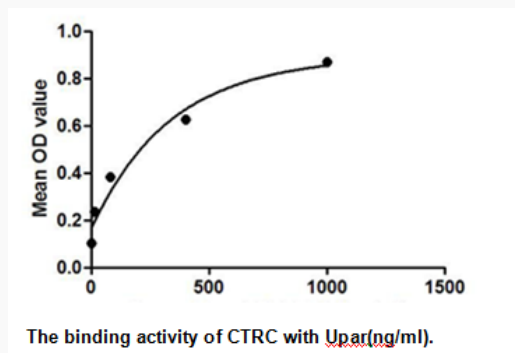
 45-1 Ramsey Road, Shirley, NY 11967, USA



WB



Binding activity



 Tel: 1-631-559-9269 1-516-512-3133

 Email: info@creative-biomart.com  Fax: 1-631-938-8127

 45-1 Ramsey Road, Shirley, NY 11967, USA