

## Recombinant Mouse CtSa Protein, His/GST-tagged

**Cat. No.** Ctsa-490M    **Lot. No.** (See product label)

### SPECIFICATION

<b>Product Overview</b>	Recombinant Mouse CtSa(Asp215~Met470) fused with His/GST tag at N-terminal was expressed in E. coli.
<b>Species</b>	Mouse
<b>Source</b>	E.coli
<b>ProteinLength</b>	Asp215~Met470
<b>Description</b>	This gene encodes a glycoprotein with deamidase, esterase and carboxypeptidase activities. The encoded protein associates with and provides a protective function to the lysosomal enzymes beta-galactosidase and neuraminidase. Deficiency of the related gene in humans results in galactosialidosis. The proprotein is processed into two shorter chains. Alternatively spliced transcript variants encoding multiple isoforms have been observed for this gene.
<b>Form</b>	PBS, pH7.4, containing 0.01% SKL, 1mM DTT, 5% Trehalose and Proclin300.
<b>Molecular Mass</b>	61.4kDa
<b>Identity</b>	Reconstitute in PBS or others
<b>Endotoxin</b>	<1.0EU per 1g (determined by the LAL method)
<b>Purity</b>	> 95%

 Tel: 1-631-559-9269    1-516-512-3133

 Email: [info@creative-biomart.com](mailto:info@creative-biomart.com)     Fax: 1-631-938-8127

 45-1 Ramsey Road, Shirley, NY 11967, USA

<b>Applications</b>	Positive Control; Immunogen; SDS-PAGE; WB. If bio-activity of the protein is needed, please check active protein
<b>Stability</b>	The thermal stability is described by the loss rate. The loss rate was determined by accelerated thermal degradation test, that is, incubate the protein at 37 centigrade for 48h, and no obvious degradation and precipitation were observed. The loss rate is less than 5% within the expiration date under appropriate storage condition.
<b>Storage</b>	Avoid repeated freeze/thaw cycles. Store at 2-8 centigrade for one month. Aliquot and store at -80 centigrade for 12 months.
<b>Reconstitution</b>	Reconstitute in PBS or others

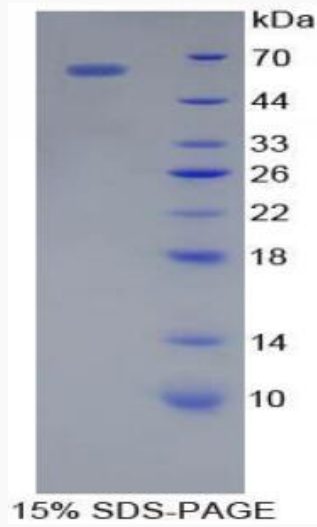
## GENE INFORMATION

<b>Gene Name</b>	<a href="#">Ctsa cathepsin A [ Mus musculus ]</a>
<b>Official Symbol</b>	<a href="#">Ctsa</a>
<b>Synonyms</b>	CTSA; cathepsin A; lysosomal protective protein; carboxypeptidase C; carboxypeptidase L; protective protein cathepsin A; protective protein for beta-galactosidase; PPCA; Ppgb; AU019505;
<b>Gene ID</b>	<a href="#">19025</a>
<b>mRNA Refseq</b>	<a href="#">NM_001038492</a>
<b>Protein Refseq</b>	<a href="#">NP_001033581</a>
<b>UniProt ID</b>	<a href="#">P16675</a>

 Tel: 1-631-559-9269 1-516-512-3133

 Email: [info@creative-biomart.com](mailto:info@creative-biomart.com)  Fax: 1-631-938-8127

 45-1 Ramsey Road, Shirley, NY 11967, USA



Tel: 1-631-559-9269 1-516-512-3133

Email: [info@creative-biomart.com](mailto:info@creative-biomart.com) Fax: 1-631-938-8127

45-1 Ramsey Road, Shirley, NY 11967, USA