

Recombinant Mouse Ctsa Protein, His-tagged

Cat. No. Ctsa-7309M Lot. No. (See product label)

SPECIFICATION

Product Overview	Recombinant Mouse Ctsa Protein with a His tag.
Species	Mouse
ProteinLength	24-474
Description	This gene encodes a glycoprotein with deamidase, esterase and carboxypeptidase activities. The encoded protein associates with and provides a protective function to the lysosomal enzymes beta-galactosidase and neuraminidase. Deficiency of the related gene in humans results in galactosialidosis. The proprotein is processed into two shorter chains. Alternatively spliced transcript variants encoding multiple isoforms have been observed for this gene.
Form	Liquid
Molecular Mass	52.4 kDa
AA Sequence	<p>APDQDEIDCLPGLAKQPSFRQYSGYLRASDSKHFHYWFVESQNDPKNSPVVLWLN GGPGCSSLDGLLTEHGPFLLIQPDGVTLEYNPYAWNLIANVLYIESPAGVGFYSYDDK MYVTNDTEVAENNYEALKDFFRLFPEYKDNKFLTGESYAGIYIPTLAVLVMQDPSM NLQGLAVGNGLASYEQNDNSLVYFAYYHGLLGNRLWTSLQTHCCAQNKCNFYDNK DPECVNNLLEVSRIVGKSGLNINLYAPCAGGVPGRHRYEDTLVVQDFGNIFTRLPL KRRFPEALMRSGDKVRLDPPCTNTTAPSNYLNNPYVRKALHIPESLPRWDMCNFLV NLQYRRLYQSMNSQYLKLLSSQKYQILLYNGDVMACNFMGDEWFVDSLQKMEV QRRPWLVDYGESGEQVAGFVKECSHITFLTIKGAGHMVPTDKPRAAFTMFSRFLNK</p>

 Tel: 1-631-559-9269 1-516-512-3133

 Email: info@creative-biomart.com  Fax: 1-631-938-8127

 45-1 Ramsey Road, Shirley, NY 11967, USA

	EPYVEHHHHHH
Endotoxin	< 1.0 EU/μg of protein (determined by LAL method)
Purity	> 90 % by SDS-PAGE
Stability	Shelf life: one year from despatch.
Storage	Store undiluted at 2-8 centigrade for one week or (in aliquots) at -20 to -80 centigrade for longer. Avoid repeated freezing and thawing.
Concentration	0.5 mg/mL (determined by absorbance at 280nm)
Storage Buffer	Phosphate Buffered Saline (pH 7.4) containing 10 % glycerol.

GENE INFORMATION

Gene Name	Ctsa cathepsin A [Mus musculus (house mouse)]
Official Symbol	Ctsa
Synonyms	Ctsa; cathepsin A; P; Pp; PPCA; Ppgb; AU019505; lysosomal protective protein; carboxypeptidase C; carboxypeptidase L; protective protein cathepsin A; protective protein for beta-galactosidase; EC 3.4.16.5
Gene ID	19025
mRNA Refseq	NM_001038492
Protein Refseq	NP_001033581

 Tel: 1-631-559-9269 1-516-512-3133

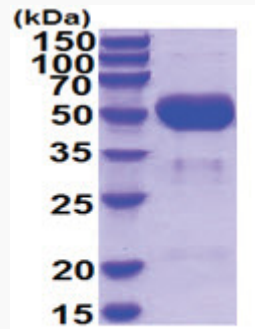
 Email: info@creative-biomart.com  Fax: 1-631-938-8127

 45-1 Ramsey Road, Shirley, NY 11967, USA

UniProt ID

P16675

SDS-PAGE



15% SDS-PAGE (3ug)

 Tel: 1-631-559-9269 1-516-512-3133

 Email: info@creative-biomart.com  Fax: 1-631-938-8127

 45-1 Ramsey Road, Shirley, NY 11967, USA