

Recombinant Mouse Ctsb Protein, His-tagged

Cat. No. Ctsb-7184M Lot. No. (See product label)

SPECIFICATION

Product Overview	Recombinant Mouse Ctsb Protein with a His tag.
Species	Mouse
ProteinLength	18-339
Description	<p>This gene encodes a member of the peptidase C1 family and preproprotein that is proteolytically processed to generate multiple protein products. These products include the cathepsin B light and heavy chains, which can dimerize to generate the double chain form of the enzyme. This enzyme is a lysosomal cysteine protease with both endopeptidase and exopeptidase activity that may play a role in protein turnover. Homozygous knockout mice for this gene exhibit reduced pancreatic damage following induced pancreatitis and reduced hepatocyte apoptosis in a model of liver injury. Pseudogenes of this gene have been identified in the genome.</p>
Form	Liquid
Molecular Mass	36.4 kDa
AA Sequence	<p>HDKPSFHPLSDDLINQNTTWQAGRNFYNVDISYLKCLKGTVLGGPKLPGRVAF GEDIDLPETFDAREQWSNCPTIGQIRDQGSWSCWAFGAVEAISDRTCIHTNGRVN VEVSAEDLLTCCGIQCGDGCNGGYPSGAWSFWTKKGLVSGGVYNHSHVCLPYTIP PCEHHVNGSRPPCTGEGDTPRCNKSCGAGYSPSYKEDKHFGYTSYSVSNVKEIM AEIYKNGPVGAFTVFSDFLTYKSGVYKHEAGDMMGGHAIRILGWGVENGVPYWLA ANSWNLDWGDNGFFKILRGENHCGIESEIVAGIPRTDQYWGRFLEHHHHHH</p>

 Tel: 1-631-559-9269 1-516-512-3133

 Email: info@creative-biomart.com  Fax: 1-631-938-8127

 45-1 Ramsey Road, Shirley, NY 11967, USA

Endotoxin	< 1.0 EU/μg of protein (determined by LAL method)
Purity	> 90 % by SDS-PAGE
Stability	Shelf life: one year from despatch.
Storage	Store undiluted at 2-8 centigrade for one week or (in aliquots) at -20 to -80 centigrade for longer. Avoid repeated freezing and thawing.
Concentration	0.5 mg/mL (determined by absorbance at 280nm)
Storage Buffer	Phosphate Buffered Saline (pH 7.4) containing 10 % glycerol.

GENE INFORMATION

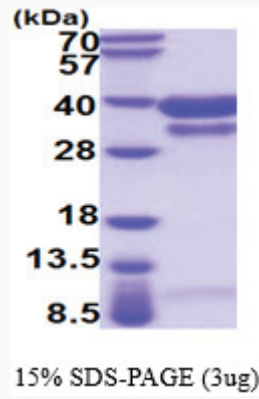
Gene Name	Ctsb cathepsin B [<i>Mus musculus</i> (house mouse)]
Official Symbol	Ctsb
Synonyms	Ctsb; cathepsin B; CB; cathepsin B; cathepsin B1; EC 3.4.22.1
Gene ID	13030
mRNA Refseq	NM_007798
Protein Refseq	NP_031824
UniProt ID	P10605

 Tel: 1-631-559-9269 1-516-512-3133

 Email: info@creative-biomart.com  Fax: 1-631-938-8127

 45-1 Ramsey Road, Shirley, NY 11967, USA

SDS-PAGE



 Tel: 1-631-559-9269 1-516-512-3133

 Email: info@creative-biomart.com  Fax: 1-631-938-8127

 45-1 Ramsey Road, Shirley, NY 11967, USA