

## Recombinant Mouse Ctsc protein, His-tagged

**Cat. No.** Ctsc-8179M    **Lot. No.** (See product label)

### SPECIFICATION

<b>Product Overview</b>	Recombinant Mouse Ctsc aa. (Pro231~Leu462 (Accession # P97821)) fused with N-terminal His tag was produced in E. coli cells.
<b>Species</b>	Mouse
<b>Source</b>	E.coli
<b>ProteinLength</b>	Pro231~Leu462
<b>Description</b>	This gene encodes a member of the peptidase C1 (papain) family of cysteine proteases. Alternative splicing results in multiple transcript variants, at least one of which encodes a preprotein that is proteolytically processed to generate multiple protein products. These products include the dipeptidyl peptidase 1 light, heavy, and exclusion domain chains, which together comprise one subunit of the homotetrameric enzyme. This enzyme has amino dipeptidase activity and may play a role in the activation of granzymes during inflammation. Homozygous knockout mice for this gene exhibit impaired granzyme activation and enhanced survival in a sepsis model.
<b>Form</b>	Freeze-dried powder
<b>Molecular Mass</b>	Predicted Molecular Mass: 27.2kDa.
<b>Endotoxin</b>	<1.0EU per 1ug (determined by the LAL method)
<b>Purity</b>	>95%

 Tel: 1-631-559-9269    1-516-512-3133

 Email: [info@creative-biomart.com](mailto:info@creative-biomart.com)     Fax: 1-631-938-8127

 45-1 Ramsey Road, Shirley, NY 11967, USA

<b>Characteristic</b>	The isoelectric point is 5.9.
<b>Applications</b>	SDS-PAGE; WB; ELISA; IP.
<b>Stability</b>	The thermal stability is described by the loss rate of the target protein. The loss rate was determined by accelerated thermal degradation test, that is, incubate the protein at 37°C for 48h, and no obvious degradation and precipitation were observed. (Referring from China Biological Products Standard, which was calculated by the Arrhenius equation.) The loss of this protein is less than 5% within the expiration date under appropriate storage condition.
<b>Storage</b>	Avoid repeated freeze/thaw cycles. Store at 2-8°C for one month. Aliquot and store at -80°C for 12 months.
<b>Storage Buffer</b>	Supplied as lyophilized form in PBS, pH7.4, containing 5% sucrose, 0.01% sarcosyl.
<b>Reconstitution</b>	Reconstitute in sterile PBS, pH7.2-pH7.4.

## GENE INFORMATION

<b>Gene Name</b>	<a href="#">Ctsc cathepsin C [ Mus musculus (house mouse) ]</a>
<b>Official Symbol</b>	<a href="#">Ctsc</a>
<b>Synonyms</b>	Ctsc; cathepsin C; CatC; DPP1; DPPI; AI047818; dipeptidyl peptidase 1; cathepsin J; dipeptidyl peptidase I; dipeptidyl transferase
<b>Gene ID</b>	<a href="#">13032</a>
<b>mRNA Refseq</b>	<a href="#">NM_009982.5</a>

 Tel: 1-631-559-9269 1-516-512-3133

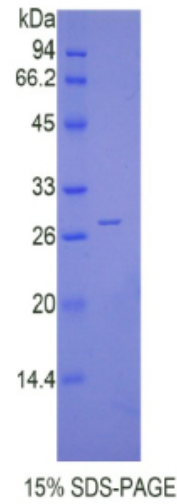
 Email: [info@creative-biomart.com](mailto:info@creative-biomart.com)  Fax: 1-631-938-8127

 45-1 Ramsey Road, Shirley, NY 11967, USA

**Protein Refseq** NP\_034112.3

**UniProt ID** P97821

**SDS-PAGE**



 Tel: 1-631-559-9269 1-516-512-3133

 Email: [info@creative-biomart.com](mailto:info@creative-biomart.com)  Fax: 1-631-938-8127

 45-1 Ramsey Road, Shirley, NY 11967, USA