

## Recombinant Rat CtSD protein, His&Myc-tagged

Cat. No. CtSD-4222R Lot. No. (See product label)

### SPECIFICATION

<b>Product Overview</b>	Recombinant Rat CtSD protein(P24268)(65-407aa), fused with N-terminal His tag and C-terminal Myc tag, was expressed in E.coli.
<b>Species</b>	Rat
<b>Source</b>	E.coli
<b>ProteinLength</b>	65-407aa
<b>Form</b>	If the delivery form is liquid, the default storage buffer is Tris/PBS-based buffer, 5%-50% glycerol. If the delivery form is lyophilized powder, the buffer before lyophilization is Tris/PBS-based buffer, 6% Trehalose, pH 8.0.
<b>Molecular Mass</b>	45.2 kDa
<b>Purity</b>	Greater than 90% as determined by SDS-PAGE.
<b>Storage</b>	Store at -20°C/-80°C upon receipt, aliquoting is necessary for multiple use. Avoid repeated freeze-thaw cycles.
<b>Reconstitution</b>	We recommend that this vial be briefly centrifuged prior to opening to bring the contents to the bottom. Please reconstitute protein in deionized sterile water to a concentration of 0.1-1.0 mg/mL. We recommend to add 5-50% of glycerol (final concentration) and aliquot for long-term storage at -20°C/-80°C.

 Tel: 1-631-559-9269 1-516-512-3133

 Email: [info@creative-biomart.com](mailto:info@creative-biomart.com)  Fax: 1-631-938-8127

 45-1 Ramsey Road, Shirley, NY 11967, USA



**AA Sequence**

EPVSELLKNYLDAQYYGEIGITPPQCFTVVFDTGSSNLWVPSIHCKLLDIACWVHHK  
YNSDKSSTYVKNGTSTFDIHYGSGSLSGYLSQDTSVPCKSDLGGIKVEKQIFGEATK  
QPGVVFIAAKFDGILGMGYPFISVNVKLPVFDNLMKQKLVEKNIFS FYLNRDPTGQPG  
GELMLGGTDSRYHHGELSYLNVTRKAYWQVHMDQLEVGSELTLCKGGCEAIVDTG  
TSLLVGPVDEVKELQKAIGAVPLIQGEYMIPCEKVSSLPIITFKLGGQNYELHPEKYILK  
VSQAGKTICLSGFMGMDIPPPSGPLWILGDVFIGCYTTFDREYNRVGFAKAATL

**GENE INFORMATION**

**Gene Name** [Ctsd cathepsin D \[ Rattus norvegicus \]](#)

**Official Symbol** [Ctsd](#)

**Synonyms** CTSD; cathepsin D;

**Gene ID** [171293](#)

**mRNA Refseq** [NM\\_134334](#)

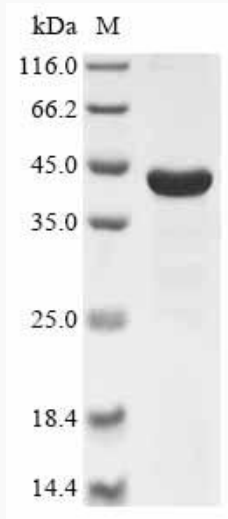
**Protein Refseq** [NP\\_599161](#)

Tel: 1-631-559-9269 1-516-512-3133

Email: [info@creative-biomart.com](mailto:info@creative-biomart.com) Fax: 1-631-938-8127

45-1 Ramsey Road, Shirley, NY 11967, USA

**SDS-PAGE**



 Tel: 1-631-559-9269 1-516-512-3133

 Email: [info@creative-biomart.com](mailto:info@creative-biomart.com)  Fax: 1-631-938-8127

 45-1 Ramsey Road, Shirley, NY 11967, USA