

## Recombinant Mouse Ctsh Protein (Glu22-Val333), C-His tagged

Cat. No. Ctsh-5638M Lot. No. (See product label)

### SPECIFICATION

<b>Product Overview</b>	Recombinant mouse Ctsh (Glu22-Val333) fused with the C-terminal His tag was expressed in mammalian cells.
<b>Species</b>	Mouse
<b>Source</b>	Mammalian Cells
<b>ProteinLength</b>	Glu22-Val333
<b>Form</b>	Lyophilized powder/frozen liquid
<b>Molecular Mass</b>	34.32 kDa
<b>Purity</b>	> 90 % as determined by SDS-PAGE
<b>Notes</b>	For research use only.
<b>Storage</b>	Use a manual defrost freezer and avoid repeated freeze thaw cycles. Store at 2 to 8 centigrade for one week. Store at -20 to -80 centigrade for twelve months from the date of receipt.
<b>Storage Buffer</b>	Supplied as solution form in PBS or lyophilized from PBS.
<b>Reconstitution</b>	Reconstitute in sterile water for a stock solution.

 Tel: 1-631-559-9269 1-516-512-3133

 Email: [info@creative-biomart.com](mailto:info@creative-biomart.com)  Fax: 1-631-938-8127

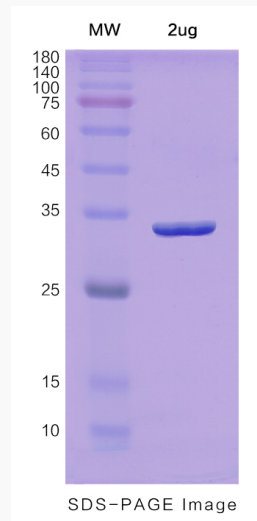
 45-1 Ramsey Road, Shirley, NY 11967, USA

**Shipping** They are shipped out with dry ice/blue ice unless customers require otherwise.

## GENE INFORMATION

<b>Gene Name</b>	Ctsh cathepsin H [ <i>Mus musculus</i> (house mouse) ]
<b>Official Symbol</b>	Ctsh
<b>Synonyms</b>	CTSH; cathepsin H; pro-cathepsin H; Cat H; cathepsin B3; cathepsin BA; AL022844;
<b>Gene ID</b>	13036
<b>mRNA Refseq</b>	NM_007801
<b>Protein Refseq</b>	NP_031827
<b>UniProt ID</b>	P49935

## SDS-PAGE



 Tel: 1-631-559-9269 1-516-512-3133

 Email: [info@creative-biomart.com](mailto:info@creative-biomart.com)  Fax: 1-631-938-8127

 45-1 Ramsey Road, Shirley, NY 11967, USA