

Recombinant Mouse Ctsh protein, His & T7-tagged

Cat. No. Ctsh-8181M **Lot. No.** (See product label)

SPECIFICATION

Product Overview	Recombinant Mouse Ctsh aa. (Ala21~Val333 (Accession # P49935)) fused with N-terminal His & T7 tag was produced in E. coli cells.
Species	Mouse
Source	E.coli
ProteinLength	Ala21~Val333
Description	This gene encodes a member of the peptidase C1 (papain) family of cysteine proteases. Alternative splicing results in multiple transcript variants, at least one of which encodes a preprotein that is proteolytically processed to generate multiple protein products. These products include the cathepsin H mini, heavy, and light chains. In rat and human, these three chains can associate to form the mature enzyme, which has both aminopeptidase and endopeptidase activities. Homozygous knockout mice for this gene exhibit impaired lung surfactant processing and reduced tumorigenesis in a pancreatic cancer model. Multiple pseudogenes of this gene have been identified in the genome.
Form	Freeze-dried powder
Molecular Mass	Predicted Molecular Mass: 38.8kDa.
Endotoxin	<1.0EU per 1ug (determined by the LAL method)

 Tel: 1-631-559-9269 1-516-512-3133

 Email: info@creative-biomart.com  Fax: 1-631-938-8127

 45-1 Ramsey Road, Shirley, NY 11967, USA

Purity	>90%
Characteristic	The isoelectric point is 8.7.
Applications	SDS-PAGE; WB; ELISA; IP.
Stability	The thermal stability is described by the loss rate of the target protein. The loss rate was determined by accelerated thermal degradation test, that is, incubate the protein at 37°C for 48h, and no obvious degradation and precipitation were observed. (Referring from China Biological Products Standard, which was calculated by the Arrhenius equation.) The loss of this protein is less than 5% within the expiration date under appropriate storage condition.
Storage	Avoid repeated freeze/thaw cycles. Store at 2-8°C for one month. Aliquot and store at -80°C for 12 months.
Storage Buffer	Supplied as lyophilized form in 20mM Tris, 150mM NaCl, pH8.0, containing 1mM EDTA, 1mM DTT, 0.01% sarcosyl, 5% trehalose, and preservative.
Reconstitution	Reconstitute in sterile ddH ₂ O.

GENE INFORMATION

Gene Name	Ctsh cathepsin H [<i>Mus musculus</i> (house mouse)]
Official Symbol	Ctsh
Synonyms	Ctsh; cathepsin H; AL022844; pro-cathepsin H; Cat H; cathepsin B3; cathepsin BA
Gene ID	13036

 Tel: 1-631-559-9269 1-516-512-3133

 Email: info@creative-biomart.com  Fax: 1-631-938-8127

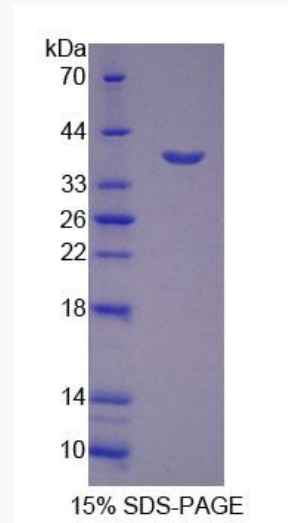
 45-1 Ramsey Road, Shirley, NY 11967, USA

mRNA Refseq [NM_001312649.1](#)

Protein Refseq [NP_001299578.1](#)

UniProt ID [P49935](#)

SDS-PAGE



 Tel: 1-631-559-9269 1-516-512-3133

 Email: info@creative-biomart.com  Fax: 1-631-938-8127

 45-1 Ramsey Road, Shirley, NY 11967, USA