

Recombinant Mouse Ctst Protein, His-tagged

Cat. No. Ctst-7187M **Lot. No.** (See product label)

SPECIFICATION

Product Overview	Recombinant Mouse Ctst Protein with a His tag.
Species	Mouse
ProteinLength	18-334
Description	<p>This gene encodes a member of the peptidase C1 (papain) family of cysteine proteases. The encoded preproprotein is proteolytically processed to generate multiple protein products. These products include the activation peptide and the cathepsin L1 heavy and light chains. The mature enzyme appears to be important in embryonic development through its processing of histone H3 and may play a role in disease progression in a model of kidney disease. Homozygous knockout mice for this gene exhibit hair loss, skin thickening, bone and heart defects, and enhanced susceptibility to bacterial infection. A pseudogene of this gene has been identified in the genome.</p>
Form	Liquid
Molecular Mass	36.8 kDa
AA Sequence	<p>TPKFDQTFSAEWHQWKSTHRRLYGTNEEEWRRRAIWEKNMRMIQLHNGEYSNGQH GFSMEMNAFGDMTNEEFRQVVNGYRHQKHKKGRLFQEPLMLKIPKSVDWREKGC VTPVKNQGQCGSCWAFSASGCGLEGQMFLKTGKLISLSEQNLVDCSHAQGNQGCN GGLMDFAFQYIKENGGLDSEESYPYEAKDGSCKYRAEFAVANDTGFVDIPQQEKAL MKAVATVGPISVAMDASHPSLQFYSSGIYYEPNCSSKNLDHGVLLVGYGYEGTDSN</p>

 Tel: 1-631-559-9269 1-516-512-3133

 Email: info@creative-biomart.com  Fax: 1-631-938-8127

 45-1 Ramsey Road, Shirley, NY 11967, USA

KNKYWLVKNSWGSEWGMEGYIKIAKDRDNHCGLATAASYPVVNLEHHHHHH

Endotoxin < 1.0 EU/μg of protein (determined by LAL method)

Purity > 90 % by SDS-PAGE

Stability Shelf life: one year from despatch.

Storage Store undiluted at 2-8 centigrade for one week or (in aliquots) at -20 to -80 centigrade for longer. Avoid repeated freezing and thawing.

Concentration 0.25 mg/mL (determined by absorbance at 280nm)

Storage Buffer Phosphate Buffered Saline (pH 7.4) containing 10 % glycerol.

GENE INFORMATION

Gene Name [Ctsl cathepsin L \[Mus musculus \(house mouse\) \]](#)

Official Symbol [Ctsl](#)

Synonyms Ctsl; cathepsin L; ME; fs; MEP; nkt; CatL; Ctsl1; 1190035F06Rik; procathepsin L; cathepsin L1; Cat L; major excreted protein; p39 cysteine proteinase; EC 3.4.22.15

Gene ID [13039](#)

mRNA Refseq [NM_009984](#)

Protein Refseq [NP_034114](#)

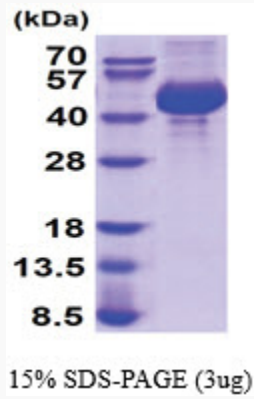
UniProt ID [P06797](#)

 Tel: 1-631-559-9269 1-516-512-3133

 Email: info@creative-biomart.com  Fax: 1-631-938-8127

 45-1 Ramsey Road, Shirley, NY 11967, USA

SDS-PAGE



 Tel: 1-631-559-9269 1-516-512-3133

 Email: info@creative-biomart.com  Fax: 1-631-938-8127

 45-1 Ramsey Road, Shirley, NY 11967, USA