

## Recombinant Mouse Ctss protein, His-tagged

**Cat. No.** Ctss-1985M    **Lot. No.** (See product label)

### SPECIFICATION

<b>Product Overview</b>	Recombinant Mouse Ctss aa. (Leu123~Glu339) fused with N-terminal His tag was produced in E. coli cells.
<b>Species</b>	Mouse
<b>Source</b>	E.coli
<b>ProteinLength</b>	Leu123~Glu339
<b>Description</b>	<p>This gene encodes a member of the peptidase C1 (papain) family of cysteine proteases. Alternative splicing results in multiple transcript variants, which encode preproteins that are proteolytically processed to generate mature protein products. This enzyme is secreted by antigen-presenting cells during inflammation and may induce pain and itch via activation of G-protein coupled receptors. Homozygous knockout mice for this gene exhibit impaired wound healing, reduced tumorigenesis in a pancreatic cancer model, and reduced pathogenesis in a myasthenia gravis model.</p>
<b>Form</b>	Freeze-dried powder
<b>Molecular Mass</b>	33kDa as determined by SDS-PAGE reducing conditions.
<b>Endotoxin</b>	<1.0EU per 1ug (determined by the LAL method)
<b>Purity</b>	> 92%

 Tel: 1-631-559-9269    1-516-512-3133

 Email: [info@creative-biomart.com](mailto:info@creative-biomart.com)     Fax: 1-631-938-8127

 45-1 Ramsey Road, Shirley, NY 11967, USA

<b>Characteristic</b>	The isoelectric point is 5.6.
<b>Applications</b>	Positive Control; Immunogen; SDS-PAGE; WB
<b>Stability</b>	The thermal stability is described by the loss rate of the target protein. The loss rate was determined by accelerated thermal degradation test, that is, incubate the protein at 37°C for 48h, and no obvious degradation and precipitation were observed. (Referring from China Biological Products Standard, which was calculated by the Arrhenius equation.) The loss of this protein is less than 5% within the expiration date under appropriate storage condition.
<b>Storage</b>	Avoid repeated freeze/thaw cycles. Store at 2-8°C for one month. Aliquot and store at -80°C for 12 months.
<b>Concentration</b>	200µg/mL
<b>Storage Buffer</b>	10mM PBS, pH7.4, containing 1mM DTT, 5% trehalose, 0.01% sarcosyl and Proclin300.
<b>Reconstitution</b>	Reconstitute in 10mM PBS (pH7.4) to a concentration of 0.1-1.0 mg/mL. Do not vortex

## GENE INFORMATION

<b>Gene Name</b>	<i>Ctss</i> cathepsin S [ <i>Mus musculus</i> (house mouse) ]
<b>Official Symbol</b>	<i>Ctss</i>
<b>Synonyms</b>	Map2k2; mitogen-activated protein kinase kinase 2; MK2; MEK2; Prkmk2; AA589381; dual specificity mitogen-activated protein kinase kinase 2; ERK activator kinase 2; MAP kinase kinase 2; MAP kinase/Erk kinase; MAPK/ERK kinase 2; MAPKK 2; MEK

 Tel: 1-631-559-9269 1-516-512-3133

 Email: [info@creative-biomart.com](mailto:info@creative-biomart.com)  Fax: 1-631-938-8127

 45-1 Ramsey Road, Shirley, NY 11967, USA

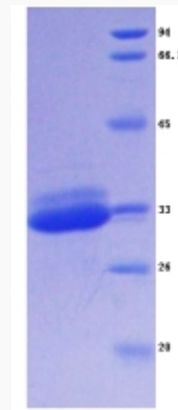
2; protein kinase, mitogen activated, kinase 2, p45

**Gene ID** 13040

**mRNA Refseq** NM\_001267695.2

**Protein Refseq** NP\_001254624.2

**UniProt ID** F6WR04



SDS-PAGE

 Tel: 1-631-559-9269 1-516-512-3133

 Email: [info@creative-biomart.com](mailto:info@creative-biomart.com)  Fax: 1-631-938-8127

 45-1 Ramsey Road, Shirley, NY 11967, USA