

Recombinant Mouse Ctss Protein, His-tagged

Cat. No. Ctss-7189M **Lot. No.** (See product label)

SPECIFICATION

Product Overview	Recombinant Mouse Ctss Protein with a His tag.
Species	Mouse
ProteinLength	21-340 (325aa)
Description	<p>This gene encodes a member of the peptidase C1 (papain) family of cysteine proteases. Alternative splicing results in multiple transcript variants, which encode preproteins that are proteolytically processed to generate mature protein products.</p> <p>This enzyme is secreted by antigen-presenting cells during inflammation and may induce pain and itch via activation of G-protein coupled receptors. Homozygous knockout mice for this gene exhibit impaired wound healing, reduced tumorigenesis in a pancreatic cancer model, and reduced pathogenesis in a myasthenia gravis model.</p>
Form	Liquid
Molecular Mass	36.9 kDa
AA Sequence	<p>EQLQRDPTLDYHWDLWKKTHEKEYKDKNEEEVRRLLIWEKNLKFIMIHNLEYSMGMH TYQVGMNDMGDMTNEEISCRMGALRISRQSPKTVTFRSYSNRTPDPTVDWREKGC VTEVKYQGSCGACWAFSAVGALEGQLKLTGKLISSAQNLDVDCSNEEKYGNKGC GGGYMTEAFQYIIDNNGGIEADASYPYKAMDEKCHYNSKNRAATCSRYIQLPFGDED ALKEAVATKGPVSVGIDASHSSFFFYKSGVYDDPSCTGNVNHGVLVVGYGTLDGKD YWLKNSWGLNFGDQGYIRMARNNKNHCGIASYCSYPEILEHHHHHHHDYWLKNS WGLNFGDQGYIRMARNNKNHCGIASYCSYPEILEHHHHHH</p>

 Tel: 1-631-559-9269 1-516-512-3133

 Email: info@creative-biomart.com  Fax: 1-631-938-8127

 45-1 Ramsey Road, Shirley, NY 11967, USA

Endotoxin	< 1.0 EU/μg of protein (determined by LAL method)
Purity	> 90 % by SDS-PAGE
Stability	Shelf life: one year from despatch.
Storage	Store undiluted at 2-8 centigrade for one week or (in aliquots) at -20 to -80 centigrade for longer. Avoid repeated freezing and thawing.
Concentration	0.5 mg/mL (determined by absorbance at 280nm)
Storage Buffer	Phosphate Buffered Saline (pH 7.4) containing 10 % glycerol.

GENE INFORMATION

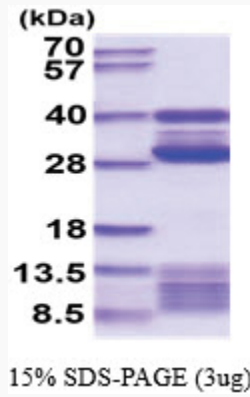
Gene Name	Ctss cathepsin S [<i>Mus musculus</i> (house mouse)]
Official Symbol	Ctss
Synonyms	Ctss; cathepsin S; Cats; cathepsin S; Cat S; EC 3.4.22.27
Gene ID	13040
mRNA Refseq	NM_001267695
Protein Refseq	NP_001254624
UniProt ID	F6WR04

 Tel: 1-631-559-9269 1-516-512-3133

 Email: info@creative-biomart.com  Fax: 1-631-938-8127

 45-1 Ramsey Road, Shirley, NY 11967, USA

SDS-PAGE



 Tel: 1-631-559-9269 1-516-512-3133

 Email: info@creative-biomart.com  Fax: 1-631-938-8127

 45-1 Ramsey Road, Shirley, NY 11967, USA