

Recombinant Mouse Ctsz Protein, His-tagged

Cat. No. Ctsz-7406M **Lot. No.** (See product label)

SPECIFICATION

Product Overview	Recombinant Mouse Ctsz protein with a His tag was expressed in insect cells.
Species	Mouse
Source	Insect Cells
ProteinLength	23-306
Description	This gene encodes a member of the peptidase C1 (papain) family of cysteine proteases. The encoded preproprotein is proteolytically processed to generate a mature enzyme with carboxypeptidase activity. An enzymatically inactive form of the protein, that is associated with the propeptide, may be involved in cancer cell invasion and proliferation. Homozygous knockout mice for this gene exhibit impaired cancer cell invasion in a breast cancer model.
Form	Liquid
Molecular Mass	32.8 kDa
AA Sequence	ARARLYFRSGQTCYHPIRGDQLALLGRRTYPRPHEYLSPADLPKNWDWRNVNGVN YASVTRNQHIPQYCGSCWAHGSTSAMADRINIKRKGAWPSILLSVQNVIDCGNAGS CEGGNDLPVWEYAHKHGIPDETCNNYQAKDQDCDFNQCCTEFKECHTIQNYT LWRVGDYGSLSGREKMMAEIYANGPISCGIMATEMMSNYTGGIYAEHQDQAVINHII SVAGWGVSNMGIEYWIVRNSWGEPWGEKGWMRIVTSTYKGGTGDSYNLAIESACT FGDPIVLEHHHHHH

 Tel: 1-631-559-9269 1-516-512-3133

 Email: info@creative-biomart.com  Fax: 1-631-938-8127

 45-1 Ramsey Road, Shirley, NY 11967, USA



Endotoxin	< 1.0 EU/μg of protein (determined by LAL method)
Purity	> 95 % by SDS-PAGE
Stability	Shelf life: one year from despatch.
Storage	Store undiluted at 2-8 centigrade for one week or (in aliquots) at -20 to -80 centigrade for longer. Avoid repeated freezing and thawing.
Concentration	0.5 mg/mL (determined by absorbance at 280nm)
Storage Buffer	Phosphate Buffered Saline (pH 7.4) containing 10 % glycerol.

GENE INFORMATION

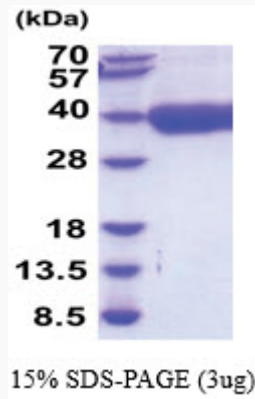
Gene Name	Ctsz cathepsin Z [Mus musculus (house mouse)]
Official Symbol	Ctsz
Synonyms	Ctsz; cathepsin Z; CTS; CTSX; AI787083; AU019819; D2Wsu143; D2Wsu143e; cathepsin Z; cathepsin X; EC 3.4.18.1
Gene ID	64138
mRNA Refseq	NM_022325
Protein Refseq	NP_071720
UniProt ID	Q9WUU7

Tel: 1-631-559-9269 1-516-512-3133

Email: info@creative-biomart.com Fax: 1-631-938-8127

45-1 Ramsey Road, Shirley, NY 11967, USA

SDS-PAGE



 Tel: 1-631-559-9269 1-516-512-3133

 Email: info@creative-biomart.com  Fax: 1-631-938-8127

 45-1 Ramsey Road, Shirley, NY 11967, USA