

Recombinant Mouse Cuzd1 protein, His & GST-tagged

Cat. No. Cuzd1-1552M Lot. No. (See product label)

SPECIFICATION

Product Overview	Recombinant Mouse Cuzd1 aa. (Ala291~Ala545 (Accession # P70412)) fused with N-terminal His & GST tag was produced in E. coli cells.
Species	Mouse
Source	E.coli
ProteinLength	Ala291~Ala545
Form	Freeze-dried powder
Molecular Mass	Predicted Molecular Mass: 56.0kDa
Endotoxin	<1.0EU per 1ug (determined by the LAL method)
Purity	>95%
Applications	SDS-PAGE; WB; ELISA; IP.
Stability	The thermal stability is described by the loss rate. The loss rate was determined by accelerated thermal degradation test, that is, incubate the protein at 37°C for 48h, and no obvious degradation and precipitation were observed. The loss rate is less than 5% within the expiration date under appropriate storage condition.
Storage	Avoid repeated freeze/thaw cycles. Store at 2-8°C for one month. Aliquot and store at

 Tel: 1-631-559-9269 1-516-512-3133

 Email: info@creative-biomart.com  Fax: 1-631-938-8127

 45-1 Ramsey Road, Shirley, NY 11967, USA

-80°C for 12 months.

Storage buffer Supplied as lyophilized form in PBS, pH7.4, containing 5% sucrose, 0.01% sarcosyl.

Reconstitution Reconstitute in sterile PBS, pH7.2-pH7.4.

Isoelectric Point 6.2

GENE INFORMATION

Gene Name [Cuzd1 CUB and zona pellucida-like domains 1 \[Mus musculus \(house mouse\) \]](#)

Official Symbol [Cuzd1](#)

Synonyms Cuzd1; CUB and zona pellucida-like domains 1; Usg; Erg-1; Uo-44; Utczp; Itmap1; CUB and zona pellucida-like domain-containing protein 1; CUB and ZP domain-containing protein 1; cuzd1; integral membrane-associated protein 1

Gene ID [16433](#)

mRNA Refseq [NM_008411.3](#)

Protein Refseq [NP_032437.3](#)

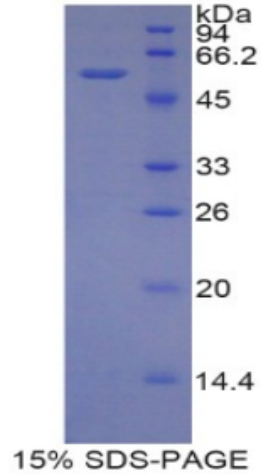
UniProt ID [B2RU69](#)

 Tel: 1-631-559-9269 1-516-512-3133

 Email: info@creative-biomart.com  Fax: 1-631-938-8127

 45-1 Ramsey Road, Shirley, NY 11967, USA

SDS-PAGE



 Tel: 1-631-559-9269 1-516-512-3133

 Email: info@creative-biomart.com  Fax: 1-631-938-8127

 45-1 Ramsey Road, Shirley, NY 11967, USA