

Recombinant Mouse X-C motif chemokine ligand 1 Protein, Tag Free

Cat. No. Cxcl1-181M **Lot. No.** (See product label)

SPECIFICATION

Product Overview	Recombinant mouse CXCL1 protein (P12850) (Asn 25-Lys 96) without tag was expressed in E. coli.
Species	Mouse
Source	E.coli
ProteinLength	25-96aa
Description	This antimicrobial gene encodes a member of the CXC subfamily of chemokines. The encoded protein is a secreted growth factor that signals through the G-protein coupled receptor, CXC receptor 2. This protein plays a role in inflammation and as a chemoattractant for neutrophils. Aberrant expression of this protein is associated with the growth and progression of certain tumors. A naturally occurring processed form of this protein has increased chemotactic activity. Alternate splicing results in coding and non-coding variants of this gene. A pseudogene of this gene is found on chromosome 4.
Tag	Non
Molecular Mass	8.2 kDa
Endotoxin	Less than 1.0 EU/μg by the LAL method.

 Tel: 1-631-559-9269 1-516-512-3133

 Email: info@creative-biomart.com  Fax: 1-631-938-8127

 45-1 Ramsey Road, Shirley, NY 11967, USA

Purity	>95% as determined by SDS-PAGE.
Storage	Please avoid repeated freeze-thaw cycles. Samples are stable for up to twelve months from date of receipt at -20 to -80 centigrade. It is recommended that aliquot the reconstituted solution to minimize freeze-thaw cycles.
Storage Buffer	Lyophilized from a 0.2 µm filtered solution of PBS, pH7.4, 5% Trehalose, 5% mannitol.
Reconstitution	Reconstitute at 250 µg/mL in sterile water.

GENE INFORMATION

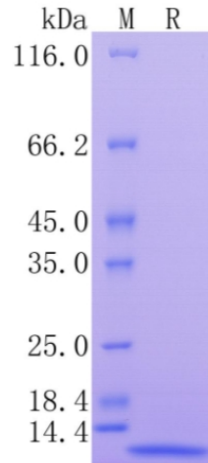
Gene Name	Cxcl1 C-X-C motif chemokine ligand 1 [Mus musculus (house mouse)]
Official Symbol	Cxcl1
Synonyms	CXCL1; chemokine (C-X-C motif) ligand 1; growth-regulated alpha protein; KC/GR)-alpha; KC/GRO-alpha; GRO1 oncogene; secretory protein N51; C-X-C motif chemokine 1; platelet-derived growth factor-inducible protein KC; KC; Fsp; N51; gro; Gro1; Mgsa; Scyb1;
Gene ID	14825
mRNA Refseq	NM_008176
Protein Refseq	NP_032202
UniProt ID	P12850

 Tel: 1-631-559-9269 1-516-512-3133

 Email: info@creative-biomart.com  Fax: 1-631-938-8127

 45-1 Ramsey Road, Shirley, NY 11967, USA

**Protein on SDS-
PAGE under
reducing (R)
condition.**



 Tel: 1-631-559-9269 1-516-512-3133

 Email: info@creative-biomart.com  Fax: 1-631-938-8127

 45-1 Ramsey Road, Shirley, NY 11967, USA