

Active Recombinant Mouse Cxcl1 Protein (Asn29-Lys96), Animal-free, Carrier-free

Cat. No. Cxcl1-33M **Lot. No.** (See product label)

SPECIFICATION

Product Overview	Recombinant Mouse Cxcl1 Protein (Asn29-Lys96) without tag was expressed in E. coli and Animal-free as well as Carrier-free.
Species	Mouse
Source	E.coli
ProteinLength	Asn29-Lys96
Description	C-X-C motif chemokine 1 (CXCL1) also named Growth-regulated oncogene alpha (GRO α), which is a chemokine of the intercrine alpha family. CXCL1 is a 7.5 kDa protein containing 68 amino acid residues. CXCL1 is often expressed in immune cells such as macrophage and neutrophils. CXCL1 plays an important role with immune responses and cancer progression. CXCL1 activates the cell signal transduction with casepas1 that affects the cell proliferation, differentiation and migration.
Form	Lyophilized
Bio-activity	Measure by its ability to chemoattract BaF3 cells transfected with human CXCR2. The ED50 for this effect is < 15 ng/mL.
Molecular Mass	The protein has a calculated MW of 7.45 kDa. The protein migrates below 11 kDa under reducing condition (SDS-PAGE analysis).

 Tel: 1-631-559-9269 1-516-512-3133

 Email: info@creative-biomart.com  Fax: 1-631-938-8127

 45-1 Ramsey Road, Shirley, NY 11967, USA



Endotoxin	< 0.1 EU/µg of the protein by the LAL method.
Purity	>95% as determined by SDS-PAGE analysis.
Storage	This product is stable after storage at: -20 centigrade for 12 months in lyophilized state from date of receipt. -20 or -80 centigrade for 1 month under sterile conditions after reconstitution. Avoid repeated freeze/thaw cycles.
Storage Buffer	Lyophilized from a 0.2 µm filtered solution containing 50 mM Tris and 150 mM NaCl, pH 8.5.
Reconstitution	It is recommended to reconstitute the lyophilized protein in sterile H2O to a concentration not less than 110 µg/mL and incubate the stock solution for at least 20 min to ensure sufficient re-dissolved.
Shipping	The product is shipped with polar packs. Upon receipt, store it immediately at -20 centigrade or lower for long term storage.

GENE INFORMATION

Gene Name	Cxcl1 chemokine (C-X-C motif) ligand 1 [<i>Mus musculus</i> (house mouse)]
Official Symbol	Cxcl1
Synonyms	CXCL1; chemokine (C-X-C motif) ligand 1; growth-regulated alpha protein; KC/GR)-alpha; KC/GRO-alpha; GRO1 oncogene; secretory protein N51; C-X-C motif chemokine 1; platelet-derived growth factor-inducible protein KC; KC; Fsp; N51; gro; Gro1; Mgsa; Scyb1;
Gene ID	14825

Tel: 1-631-559-9269 1-516-512-3133

Email: info@creative-biomart.com Fax: 1-631-938-8127

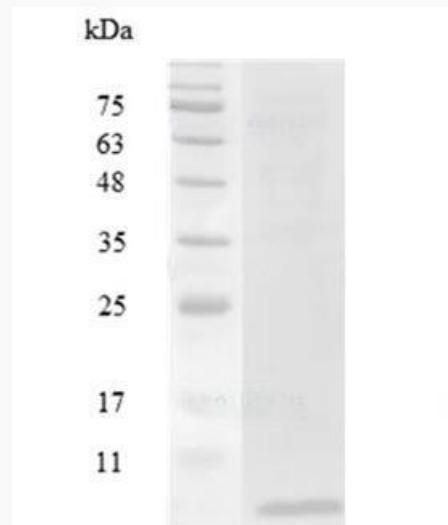
45-1 Ramsey Road, Shirley, NY 11967, USA

mRNA Refseq [NM_008176](#)

Protein Refseq [NP_032202](#)

UniProt ID [P12850](#)

**SDS-PAGE analysis
of recombinant
mouse CXCL1.**



 Tel: 1-631-559-9269 1-516-512-3133

 Email: info@creative-biomart.com  Fax: 1-631-938-8127

 45-1 Ramsey Road, Shirley, NY 11967, USA