

Recombinant Mouse Cxcl1 Protein (Arg20-Lys96), C-His tagged

Cat. No. Cxcl1-5680M **Lot. No.** (See product label)

SPECIFICATION

Product Overview	Recombinant mouse Cxcl1 (Arg20-Lys96) fused with the C-terminal His tag was expressed in mammalian cells.
Species	Mouse
Source	Mammalian Cells
ProteinLength	Arg20-Lys96
Form	Lyophilized powder/frozen liquid
Molecular Mass	8.47 kDa
Purity	> 90 % as determined by SDS-PAGE
Notes	For research use only.
Storage	Use a manual defrost freezer and avoid repeated freeze thaw cycles. Store at 2 to 8 centigrade for one week. Store at -20 to -80 centigrade for twelve months from the date of receipt.
Storage Buffer	Supplied as solution form in PBS or lyophilized from PBS.
Reconstitution	Reconstitute in sterile water for a stock solution.

 Tel: 1-631-559-9269 1-516-512-3133

 Email: info@creative-biomart.com  Fax: 1-631-938-8127

 45-1 Ramsey Road, Shirley, NY 11967, USA

Shipping

They are shipped out with dry ice/blue ice unless customers require otherwise.

GENE INFORMATION**Gene Name**Cxcl1 chemokine (C-X-C motif) ligand 1 [*Mus musculus* (house mouse)]**Official Symbol**

Cxcl1

Synonyms

CXCL1; chemokine (C-X-C motif) ligand 1; growth-regulated alpha protein; KC/GR)-alpha; KC/GRO-alpha; GRO1 oncogene; secretory protein N51; C-X-C motif chemokine 1; platelet-derived growth factor-inducible protein KC; KC; Fsp; N51; gro; Gro1; Mgsa; Scyb1;

Gene ID

14825

mRNA Refseq

NM_008176

Protein Refseq

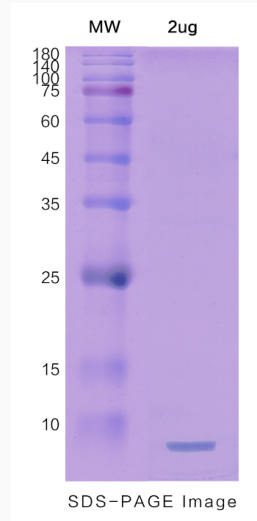
NP_032202

UniProt ID

P12850

 Tel: 1-631-559-9269 1-516-512-3133 Email: info@creative-biomart.com  Fax: 1-631-938-8127 45-1 Ramsey Road, Shirley, NY 11967, USA

SDS-PAGE



 Tel: 1-631-559-9269 1-516-512-3133

 Email: info@creative-biomart.com  Fax: 1-631-938-8127

 45-1 Ramsey Road, Shirley, NY 11967, USA